

YOUR WISHES SET OUR STANDARDS

Member of the Network

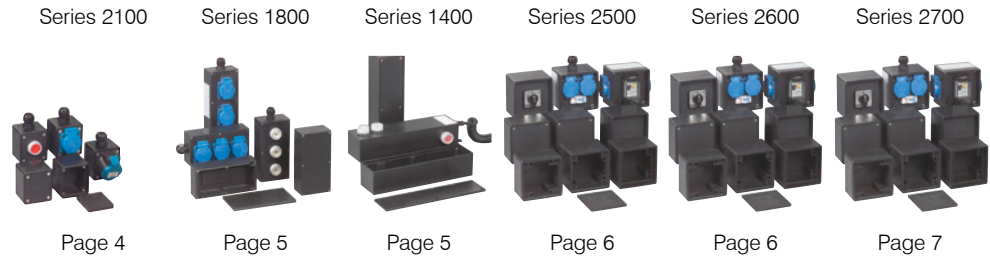
LEITBETRIEBE AUSTRIA  
[www.leitbetriebe.at](http://www.leitbetriebe.at)

## Solid rubber boxes



## Solid rubber boxes IP54 (IP44)

Pages 4 - 7



## Solid rubber boxes IP65

Pages 8 - 10



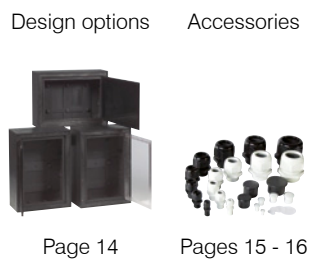
## Solid rubber boxes IP65 (IP54)

Pages 11 - 13



## Design options / accessories

Pages 14 - 16



## Application examples

Page 17



**Solid rubber material**

- Superior stability: shatterproof, impact-resistant, stable form and resistant to ageing.
- Integrated wall mounting provides protective insulation - separated from the wired area.
- Captive stainless steel top screws.
- No corrosion.
- Dust-tight and protected against water jets (IP65).
- No condensation (even where there are significant temperature fluctuations).
- High temperature resistance from -30° up to +80°C.
- Resistant to chemicals (oils, fat, many acids and caustics).  
Weather-, UV- and ozone-resistant.
- The special mixture of butyl rubber is self-extinguishing, and does not contain silicone or halogen. In case of fire it produces little smoke. No release of caustic or toxic materials.
- Tested quality.  $\text{C} \in \text{OVE} \text{T}$

**For universal application**

- Fast on-site assembly. Adhesive drilling jig, dowel plugs and screws included (only for Series 1010, 1212, 1616, 1812, 2516 and 3020).
- Solid rubber box can be adapted easily with conventional tools such as spiral drilling machines, step drills, milling cutters, etc.
- Cable glands can be placed wherever they are needed for clean installation.
- Time-saving retrofitting on boxes that have already been installed.
- No fixed installation points on the base. You can choose where to place the partitions.
- Easy adjustment of built-in units with chipboard screws.
- All conventional clamps or binders can be built in.
- The front panel, made of polycarbonate or solid rubber, is easy to work with.
- Keys, switches, control switch and recording devices can also be quickly installed.

**Safe, indestructible**

- Suitable for all fields of application in industry and services.
- Suitable for dry and damp areas.
- Suitable for outdoor use, protected from rain, snow and sun.
- Manufactured to your specification (with attached cable glands, standard binders, switches, keys, as well as Schuko and CEE socket or other plug-in systems).
- On request: engraving or labelling for identification or operation and technical references.

## Series 2100

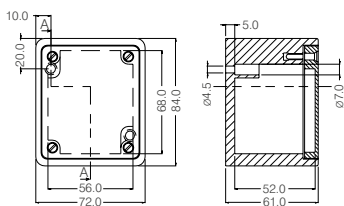


### Technical data

Width x height x depth: 72 x 84 x 61 mm  
 Type of protection: IP54  
 Material: Cover: polyamide  
 Cabinet: solid rubber halogen-free  
 Gasket: Solid rubber round cord  
 Cover fixing: Stainless steel cross-head screw

EDP No.	Product ID No.	Colour
26413	2100.PA.L	black

All parts, including those provided by you, can be installed during the manufacturing process in the box of your choice.



**Series 1800**

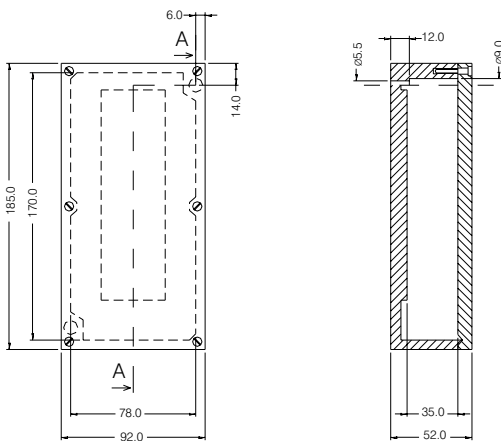


**Technical data**

Width x height x depth: 92 x 185 x 52 mm  
 Type of protection: IP54  
 Material: Cover: solid rubber halogen-free  
 Cabinet: solid rubber halogen-free  
 Gasket: Foamed polyurethane gasket  
 Cover fixing: Stainless steel cross-head screw

EDP No.	Product ID No.	Colour
30994	1800.L	black

All parts, including those provided by you, can be installed during the manufacturing process in the box of your choice.



**Series 1400**

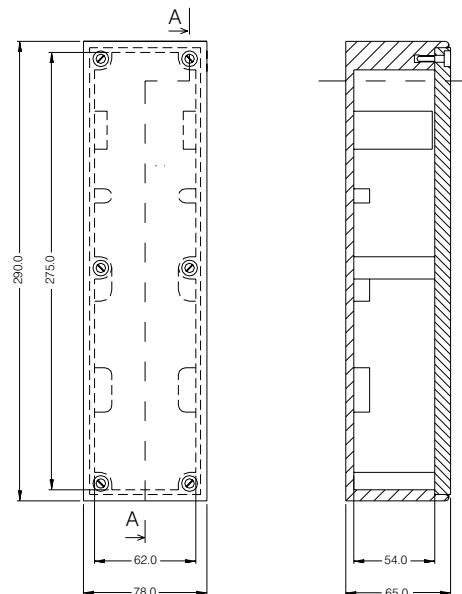


**Technical data**

Width x height x depth: 78 x 290 x 65 mm  
 Type of protection: IP44  
 Material: Cover: polycarbonate  
 Cabinet: solid rubber halogen-free  
 Gasket: Solid rubber round cording lip  
 Cover fixing: Stainless steel cross-head slotted screw

EDP No.	Product ID No.	Colour
34251	1400.L	black

All parts, including those provided by you, can be installed during the manufacturing process in the box of your choice.



## Series 2500



### Technical data

Width x height x depth: 110 x 110 x 79 mm  
 Type of protection: IP54  
 Material: Cover: polyamide  
 Cabinet: solid rubber halogen-free  
 Gasket: Solid rubber round cord  
 Cover fixing: Stainless steel cross-head screw

## Series 2600



### Technical data

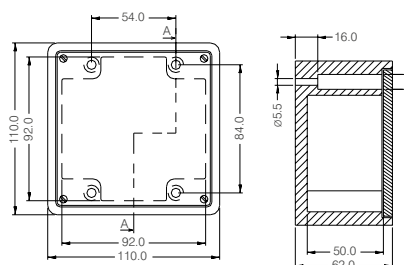
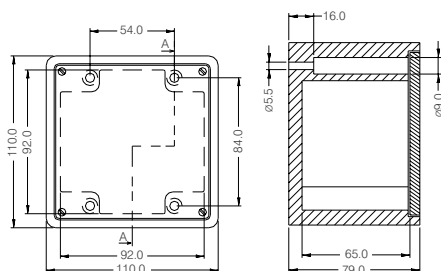
Width x height x depth: 110 x 110 x 62 mm  
 Type of protection: IP54  
 Material: Cover: polyamide  
 Cabinet: solid rubber halogen-free  
 Gasket: Solid rubber round cord  
 Cover fixing: Stainless steel cross-head screw

EDP No.	Product ID No.	Colour
27537	2500.PA.L	black

EDP No.	Product ID No.	Colour
26299	2600.PA.L	black

All parts, including those provided by you, can be installed during the manufacturing process in the box of your choice.

All parts, including those provided by you, can be installed during the manufacturing process in the box of your choice.



Series 2700

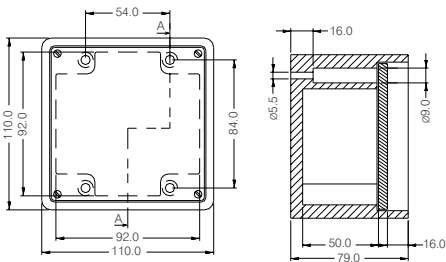


Technical data

Width x height x depth: 110 x 110 x 79 mm  
 Type of protection: IP54  
 Material: Cover: polyamide  
 Cabinet: solid rubber halogen-free  
 Gasket: Solid rubber round cord  
 Cover fixing: Stainless steel cross-head screw

EDP No.	Product ID No.	Colour
26485	2700.PA.L	black

All parts, including those provided by you, can be installed during the manufacturing process in the box of your choice.



## Series 1010



### Technical data

Width x height x depth: 100 x 100 x 65 mm  
 Type of protection: IP65  
 Material: Cover: polycarbonate (black, grey)  
 Cabinet: solid rubber halogen-free (black, grey)  
 Gasket: Foamed polyurethane gasket  
 Cover fixing: Stainless steel cross-head slotted screw

## Series 1212



### Technical data

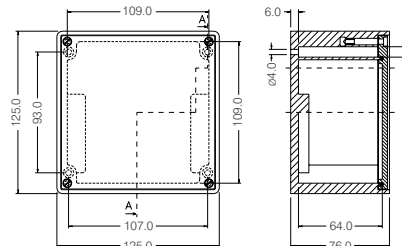
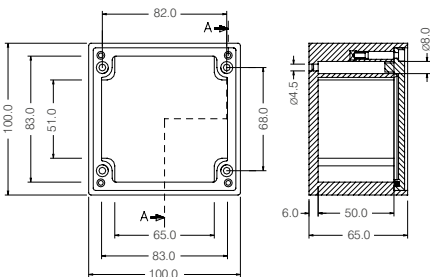
Width x height x depth: 125 x 125 x 76 mm  
 Type of protection: IP65  
 Material: Cover: polycarbonate (black, grey, transparent)  
 Cabinet: solid rubber halogen-free (black, grey)  
 Gasket: Foamed polyurethane gasket  
 Cover fixing: Stainless steel cross-head slotted screw

EDP No.	Product ID No.	Colour
68130	1010.L	black
68131	1010.GRAU.L	grey

EDP No.	Product ID No.	Colour
41895	1212.L	black
41896	1212.GRAU.L	grey

All parts, also those provided by you, can be installed during our fabrication process in the box of your choice

All parts, also those provided by you, can be installed during our fabrication process in the box of your choice



**Series 1616**

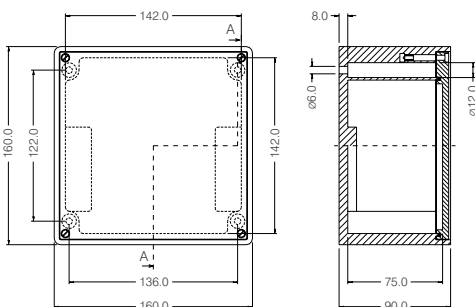


**Technical data**

Width x height x depth: 160 x 160 x 90 mm  
 Type of protection: IP65  
 Material: Cover: polycarbonate (black, grey, transparent)  
 Cabinet: solid rubber halogen-free (black, grey)  
 Gasket: Foamed polyurethane gasket  
 Cover fixing: Stainless steel cross-head slotted screw

EDP No.	Product ID No.	Colour
41924	1616.L	black
41925	1616.GRAU.L	grey

All parts, also those provided by you, can be installed during our fabrication process in the box of your choice



**Series 1812**

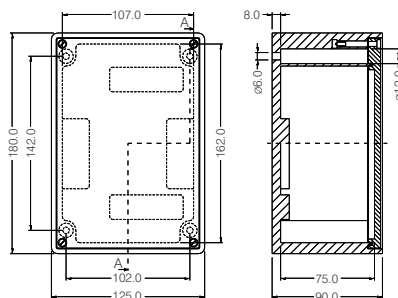


**Technical data**

Width x height x depth: 125 x 180 x 90 mm  
 Type of protection: IP65  
 Material: Cover: polycarbonate (black, grey, transparent)  
 Cabinet: solid rubber halogen-free (black, grey)  
 Gasket: Foamed polyurethane gasket  
 Cover fixing: Stainless steel cross-head slotted screw

EDP No.	Product ID No.	Colour
41928	1812.L	black
41929	1812.GRAU.L	grey

All parts, also those provided by you, can be installed during our fabrication process in the box of your choice



## Series 2516



### Technical data

Width x height x depth: 160 x 250 x 90 mm  
 Type of protection: IP65  
 Material: Cover: polycarbonate (black, grey, transparent)  
 Cabinet: solid rubber halogen-free (black, grey)  
 Gasket: Foamed polyurethane gasket  
 Cover fixing: Stainless steel cross-head slotted screw

## Series 3020



### Technical data

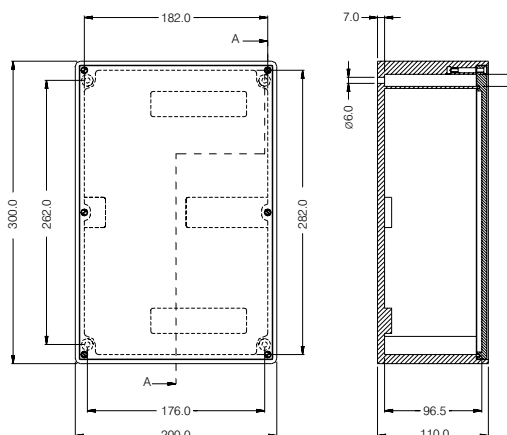
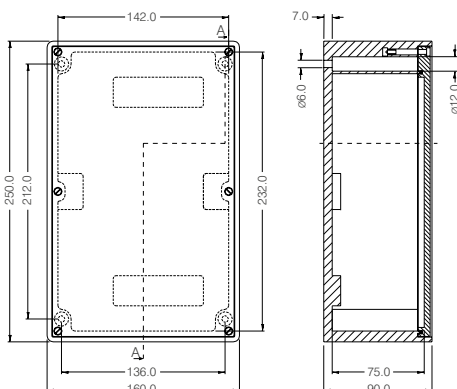
Width x height x depth: 200 x 300 x 110 mm  
 Type of protection: IP65  
 Material: Cover: polycarbonate (black, grey, transparent)  
 Cabinet: solid rubber halogen-free (black, grey)  
 Gasket: Foamed polyurethane gasket  
 Cover fixing: Stainless steel cross-head slotted screw

EDP No.	Product ID No.	Colour
41932	2516.L	black
41933	2516.GRAU.L	grey

EDP No.	Product ID No.	Colour
49612	3020.L	black
49614	3020.GRAU.L	grey

All parts, including those provided by you, can be installed during the manufacturing process in the box of your choice.

All parts, including those provided by you, can be installed during the manufacturing process in the box of your choice.



Series 2612

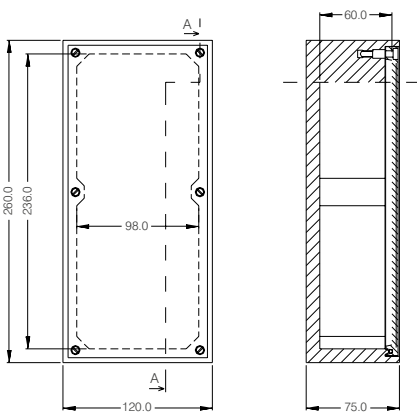


Technical data

Width x height x depth: 120 x 260 x 75 mm  
 Type of protection: IP65  
 Material: Cover: polycarbonate  
 Cabinet: solid rubber halogen-free  
 Gasket: Foamed polyurethane gasket  
 Cover fixing: Stainless steel cross-head slotted screw

EDP No.	Product ID No.	Colour
32153	2612.L	black

All parts, including those provided by you, can be installed during the manufacturing process in the box of your choice.



## Series 3800, 3900



### Technical data

Width x height x depth: Series 3800: 250 x 360 x 133 mm  
 Series 3900: 250 x 360 x 173 mm  
 Other depths on request.

Type of protection: IP65

Material: Cover: solid rubber halogen-free  
 Cabinet: solid rubber halogen-free

Gasket: Foamed polyurethane gasket

Cover fixing: Stainless steel cross-head slotted screw

## Series 3800, 3900 with door



### Technical data

Width x height x depth: Series 3800: 250 x 360 x 133 mm  
 Series 3900: 250 x 360 x 173 mm  
 Other depths on request.

Type of protection: IP54

Material: Door: gifadur (black)  
 Cabinet: solid rubber halogen-free

Gasket: Foamed polyurethane gasket

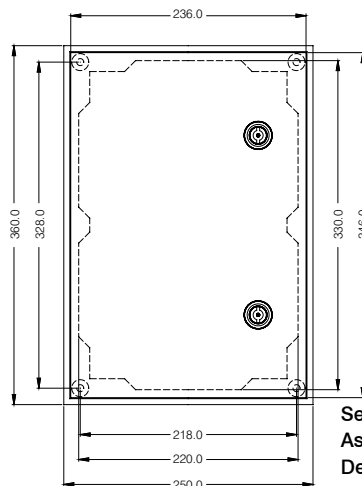
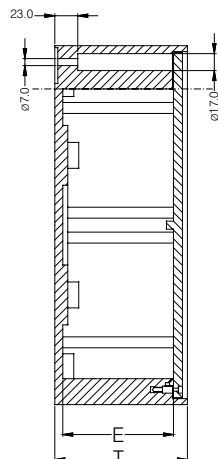
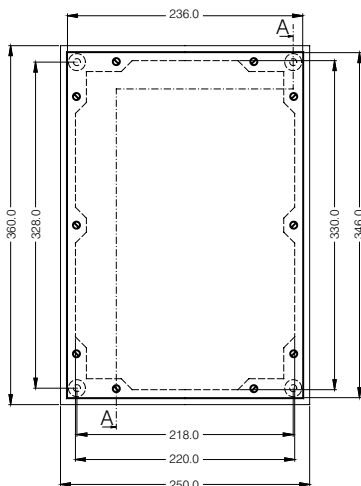
Cover fixing: Hinge / rotating lock

EDP No.	Product ID No.	Colour
42270	3800.GLATT.L.M	black
42271	3900.GLATT.L.M	black

EDP No.	Product ID No.	Colour
83162	3800T.2DREHR.L.M	black
83161	3900T.2DREHR.L.M	black

All parts, including those provided by you, can be installed during the manufacturing process in the box of your choice.

All parts, including those provided by you, can be installed during the manufacturing process in the box of your choice.



Series	3800	3900
Assembly dimension (E)	110	150
Depth (T)	133	173

**Series 7800, 7900**



**Technical data**

Width x height x depth: Series 7800: 360 x 500 x 133 mm  
Series 7900: 360 x 500 x 173 mm  
Other depths on request.

Type of protection: IP65

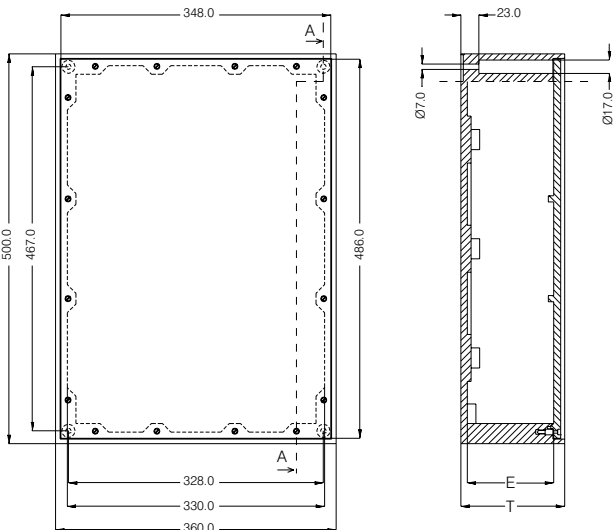
Material: Cover: solid rubber halogen-free  
Cabinet: solid rubber halogen-free

Gasket: Foamed polyurethane gasket

Cover fixing: Stainless steel cross-head slotted screw

EDP No.	Product ID No.	Colour
39112	7800.GLATT.L.M	black
39115	7900.GLATT.L.M	black

All parts, including those provided by you, can be installed during the manufacturing process in the box of your choice.



**Series 7800, 7900 with door**



**Technical data**

Width x height x depth: Series 7800: 360 x 500 x 133 mm  
Series 7900: 360 x 500 x 173 mm  
Other depths on request.

Type of protection: IP54

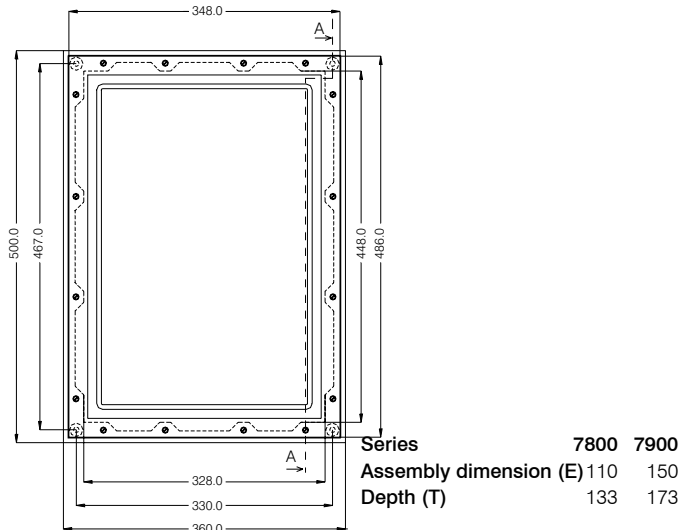
Material: Door: polycarbonate (black, transparent)  
Cabinet: solid rubber halogen-free

Gasket: Foamed polyurethane gasket

Cover fixing: Hinge / rotating lock

EDP No.	Product ID No.	Colour
83159	7800.TÜRE.SCHWARZ.2DREHR.L.M	box black door black
83160	7800.TÜRE.TRANSPARENT.2DREHR.L.M	box black door transp.
83157	7900.TÜRE.SCHWARZ.2DREHR.L.M	box black door black
83158	7900.TÜRE.TRANSPARENT.2DREHR.L.M	box black door transp.

All parts, including those provided by you, can be installed during the manufacturing process in the box of your choice.



Series	7800	7900
Assembly dimension (E)	110	150
Depth (T)	133	173

## Design options Series 3800/3900 and 7800/7900 with door



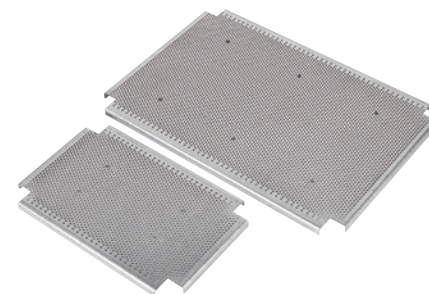
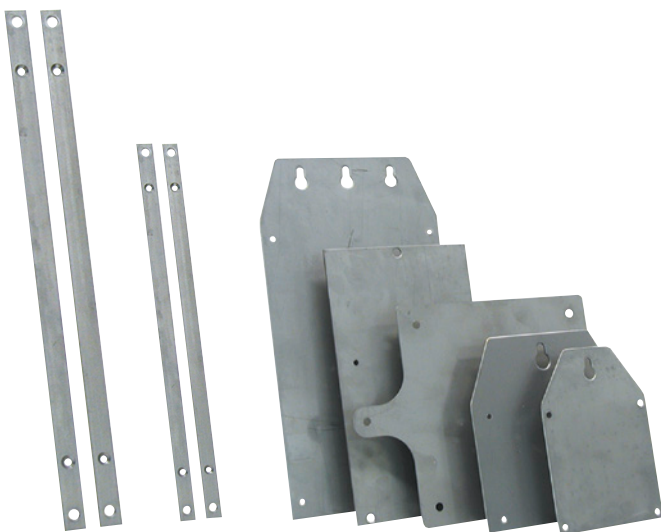
### Design options:

- Doors with left or right hinges
- 1-/3-part contact protection
- Different locking systems: Plastic bolt lock, half cylinder, H 36000 Rotary cabinet bolt (also lockable)
- Mounting plates
- Standard bars and binders
- Different cable glands
- Mounting frame



Please get in touch with us.

Our engineers would be pleased to help you to assemble the box of your choice.



**Accessories**

**Water-tight cable glands IP68**

EDP No.	Description / Product ID No. (grey/black clamping area)	Colour	Drilling diameter for counter nut mounting	Core drilling diameter for direct screwing
63726	KV.M12.METRISCH.2,5-6,5.MM.GRAU	grey	13 - 14 mm	11 mm
63611	KV.M12.METRISCH.2,5-6,5.MM.SCHWARZ	black		
63727	KV.M16.METRISCH.3,5-10.MM.GRAU	grey	17 - 18 mm	15 mm
63610	KV.M16.METRISCH.3,5-10.MM.SCHWARZ	black		
63728	KV.M20.METRISCH.7-14.MM.GRAU	grey	21 - 22 mm	19 mm
63607	KV.M20.METRISCH.7-14.MM.SCHWARZ	black		
63730	KV.M25.METRISCH.9-18.MM.GRAU	grey	26 - 27 mm	24 mm
63557	KV.M25.METRISCH.9-18.MM.SCHWARZ	black		
63731	KV.M32.METRISCH.14-25.MM.GRAU	grey	33 - 34 mm	31 mm
63609	KV.M32.METRISCH.14-25.MM.SCHWARZ	black		
63733	KV.M40.METRISCH.18-32.MM.GRAU	grey	41 - 42 mm	39 mm
63568	KV.M40.METRISCH.18-32.MM.SCHWARZ	black		
63734	KV.M50.METRISCH.24-38,5.MM.GRAU	grey	51 - 52 mm	49 mm
63569	KV.M50.METRISCH.24-38,5.MM.SCHWARZ	black		
63735	KV.M63.METRISCH.35-48.MM.GRAU	grey	64 - 65 mm	62 mm
63570	KV.M63.METRISCH.35-48.MM.SCHWARZ	black		

**Dummy plugs**

Made of fibre-glass reinforced polyamide PA 6 GF 30 for cable glands M12-M32 (only in bright grey RAL 7035).

EDP No.	Product ID No.
68175	BLINDSTOPFEN.M12.GRAU
68176	BLINDSTOPFEN.M16.GRAU
68025	BLINDSTOPFEN.M20.GRAU
68177	BLINDSTOPFEN.M25.GRAU
68178	BLINDSTOPFEN.M32.GRAU
68179	BLINDSTOPFEN.M40.GRAU
68180	BLINDSTOPFEN.M50.GRAU
68181	BLINDSTOPFEN.M63.GRAU

**Dummy disks**

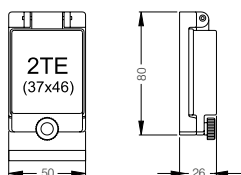
Made of polyethylene (PE-LD) for cable glands with metric thread.

EDP No.	Product ID No.	outer diameter in mm	thickness in mm
63986	KV.BLINDSCHEIBE.M12	9.5	0.5
63982	KV.BLINDSCHEIBE.M16	15.5	0.5
63987	KV.BLINDSCHEIBE.M20	18.6	0.5
63577	KV.BLINDSCHEIBE.M25	23.0	0.5
63983	KV.BLINDSCHEIBE.M32	28.5	0.5

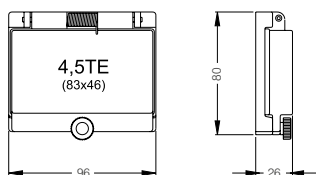
**Supporting rail, bar**

Cut to length, drilled and mounted.  
 TS35 for Series 1010, 1212, 1616, 1812, 2516, 3020

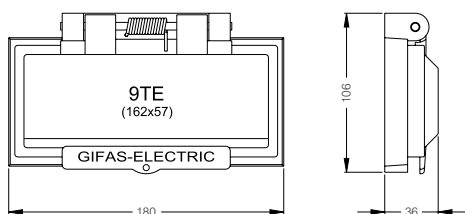
## Makrolon covers



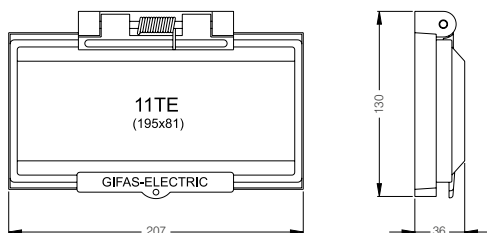
EDP No.	Product ID No.
10227	KLADECK.2.SW



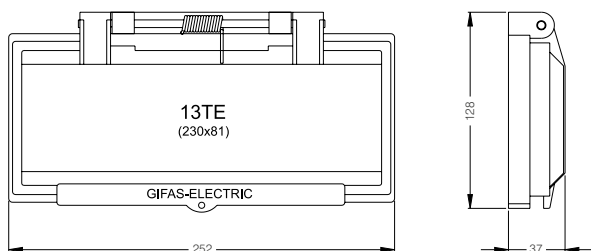
EDP No.	Product ID No.
41291	KLADECK.4.5. +DICHTUNG



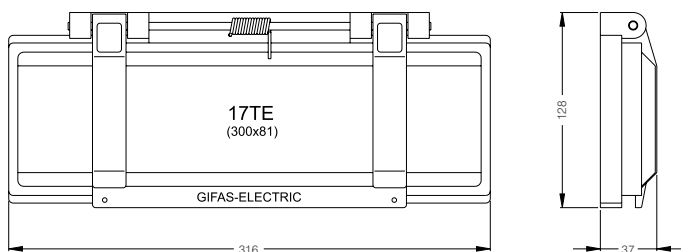
EDP No.	Product ID No.
12137	80.94.01.K
25544	RÄNDELSCHRAUBE.KU.KOPF



EDP No.	Product ID No.
12003	70.94.01.K
25544	RÄNDELSCHRAUBE.KU.KOPF

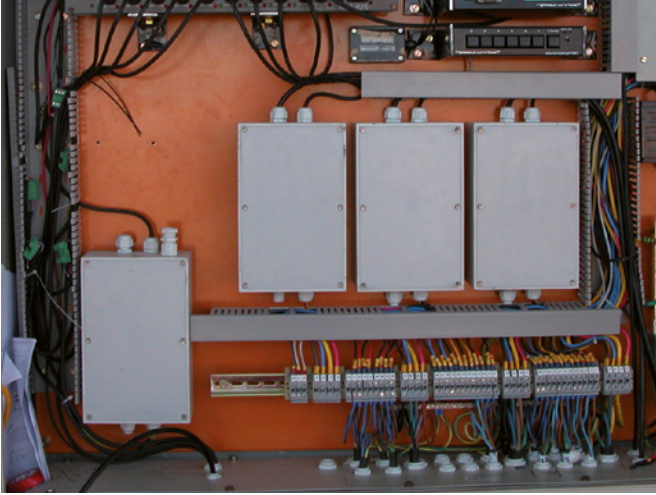


EDP No.	Product ID No.
50609	74.94.01.K
25544	RÄNDELSCHRAUBE.KU.KOPF



EDP No.	Product ID No.
36055	75.94.02.K
+ 2 pieces:	
25544	RÄNDELSCHRAUBE.KU.KOPF

Application examples / customer solutions







CONTACT US



**GIFAS**  
ELECTRIC

GIFAS-ELECTRIC GmbH      Web: [www.gifas.at](http://www.gifas.at)  
Pebering-Straß 2      Mail: [office@gifas.at](mailto:office@gifas.at)  
5301 Eugendorf      Phone: +43 6225 / 7191 - 0  
AUSTRIA      Fax: +43 6225 / 7191 - 47

Subject to technical changes V10/2013