

YOUR WISHES SET OUR STANDARDS

Member of the Network

LEITBETRIEBE AUSTRIA
www.leitbetriebe.at



Floor outlets



GIFAS
ELECTRIC

11b

Piccolissimo with hinged cover

Pages 4 - 6

Piccolissimo
E110K



Page 4

Piccolissimo
E120K



Page 5

Piccolissimo
E120KA



Page 6

Piccolissimo with screw cap

Pages 7 - 9

Piccolissimo
E120S



Page 7

Piccolissimo
E120W



Page 8

Piccolissimo
R155W



Page 9

Rondissimo

Pages 10 - 11

Rondissimo
E170.1HE



Page 10

Rondissimo
E170.2HE



Page 11

GIFAS floor outlets

The well-designed and robust floor outlets made of aluminium are available in 8 different sizes.

These smart all-rounders are used in congress halls and event spaces, the hotel industry and gastronomy, company buildings, industrial areas, outdoor facilities etc. - basically anywhere there are high levels of demand for functionality and safety.

All models can be travelled over and depending on the model, can even be used on floors that require wet cleaning, where there is splashing water and outdoors.

As well as standard options quoted with the set equipment, the floor outlets can also be individually tailored. The GIFAS sales professionals are happy to fulfil their customer requests.

And of course, only the trusted GIFAS equipment range is used, meaning that the usual first-class quality can also be guaranteed for this product range.

Piccolissimo and Rondissimo - sophisticated technology and ambitious design.

Piccolissimo E110K



Floor outlet with hinged cover - for raised indoor areas

Technical data

Outer dimensions (L x W): 113 x 97 mm
Installation depth: 70 mm
Material: Aluminium, natural RAL 9006
(resistant to salt- and seawater)

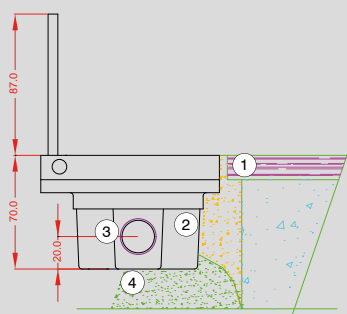
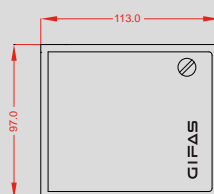
Characteristics

- Floor outlet with hinged cover, to be set at floor level
- For 1x input 45 x 45 x 4 mm (e.g. Schuko, RJ45, etc.)
- Can be travelled over when closed
- Suitable for maintenance with wet sweeping devices when closed (IP65)
- When plugged in: only for floors that are dry cleaned (IP20)

EDP No.	Product ID No.
107195	PICCOLISSIMO.E110K.AL.NAT.RAL9006FS.1X309.M Floor outlet including hinged cover without cable outlet and 1x Schuko socket

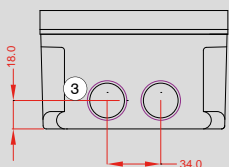
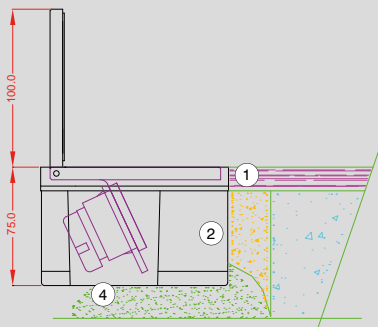
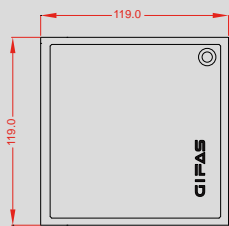
Other equipment options on request.

- 1 Floor covering
- 2 Backfilling
- 3 Bore hole 2/M25x1.5 + 1 BST
- 4 Mortar bed for levelling





- ① Floor covering
- ② Backfilling
- ③ Bore hole 2/M25x1.5 + 1 BST
- ④ Mortar bed for levelling



Floor outlet with hinged cover - for raised indoor areas

Technical data

Outer dimensions (L x W): 119 x 119 mm
 Installation depth: 75 mm
 Material: Aluminium, natural anodised (resistant to salt- and seawater)

Characteristics

- Floor outlet with hinged cover, to be set at floor level
- For 2x input 45 x 45 x 4 mm (e.g. Schuko, RJ45, etc.)
- Can be travelled over when closed
- Suitable for maintenance with wet sweeping devices when closed (IP65)
- When plugged in: only for floors that are dry cleaned (IP20)

EDP No.	Product ID No.
107191	PICCOLISSIMO.E120K.AL.NAT.2X309.M Floor outlet including hinged cover without cable outlet and 2x Schuko sockets

Other equipment options on request.

Piccolissimo E120KA



Floor outlet with hinged cover - for raised indoor areas

Technical data

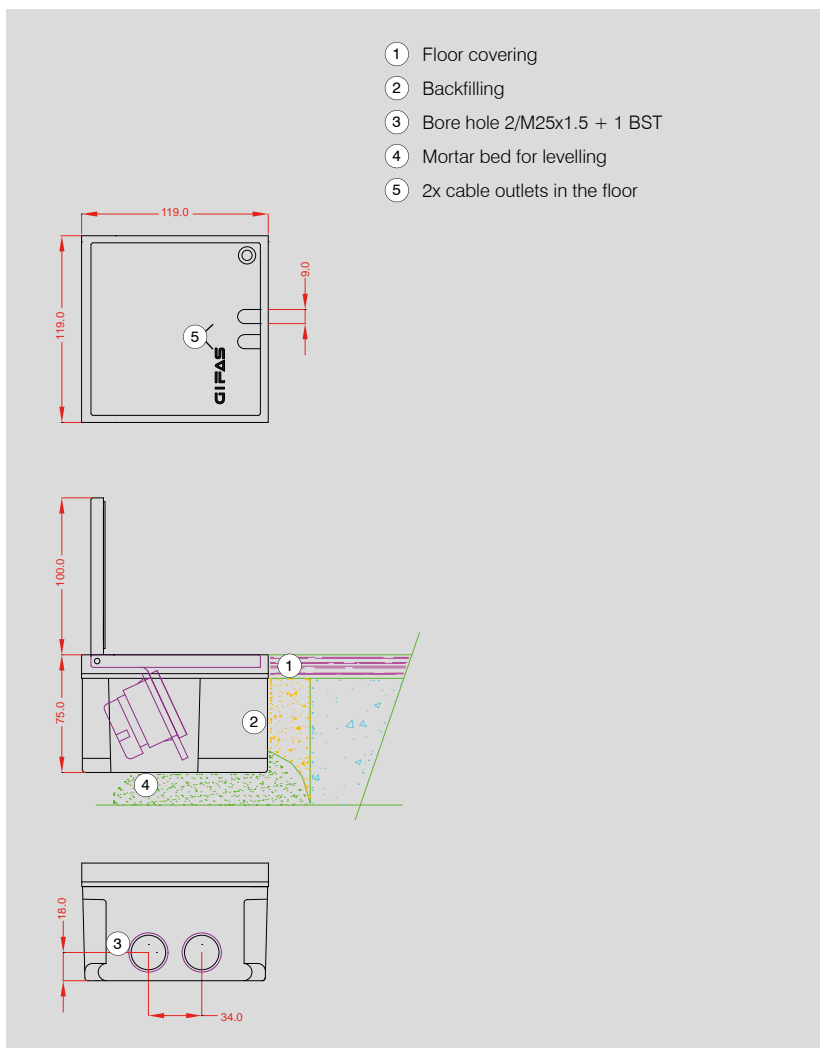
Outer dimensions (L x W): 119 x 119 mm
 Installation depth: 75 mm
 Material: Aluminium, natural anodized (resistant to salt- and seawater)

Characteristics

- Floor outlet with hinged cover, to be set at floor level, including 2x cable outlets
- For 2x input 45 x 45 x 4 mm (e.g. Schuko, RJ45, etc.)
- Can be travelled over when closed
- Only for dry clean floors, both when closed and when plugged in (IP20)

EDP No.	Product ID No.
107193	PICCOLISSIMO.E120KA.AL.NAT.2X309.M Floor outlet including hinged cover with 2x cable outlets and 2x Schuko sockets

Other equipment options on request.





- ① Floor covering
- ② Backfilling
- ③ Bore hole 2/M25x1.5 + 1 BST
- ④ Mortar bed for levelling

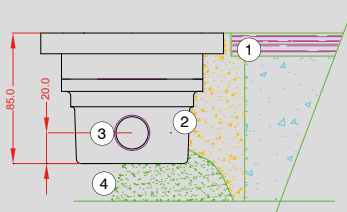
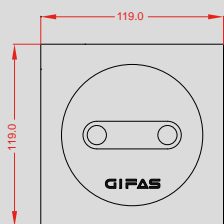
Floor outlet with screw cap - for raised indoor areas

Technical data

Outer dimensions (L x W): 119 x 119 mm
 Installation depth: 85 mm
 Material: Aluminium, natural anodized
 (resistant to salt- and seawater)

Characteristics

- Floor outlet with hinged cover, to be set at floor level
- For 1x input 45 x 45 x 4 mm (e.g. Schuko, RJ45, etc.)
- Can be travelled over when closed
- Suitable for maintenance with wet sweeping devices when closed (IP67)
- When plugged: only for floors that are dry cleaned (IP20)



EDP No.	Product ID No.
107199	PICCOLISSIMO.E120S.AL.NAT.1X309.M Floor outlet including screw cap without cable outlet and 1x Schuko socket

Other equipment options on request.

Piccolissimo E120W



Floor outlet with screw cap and outlet pipe - for raised indoor areas

Technical data

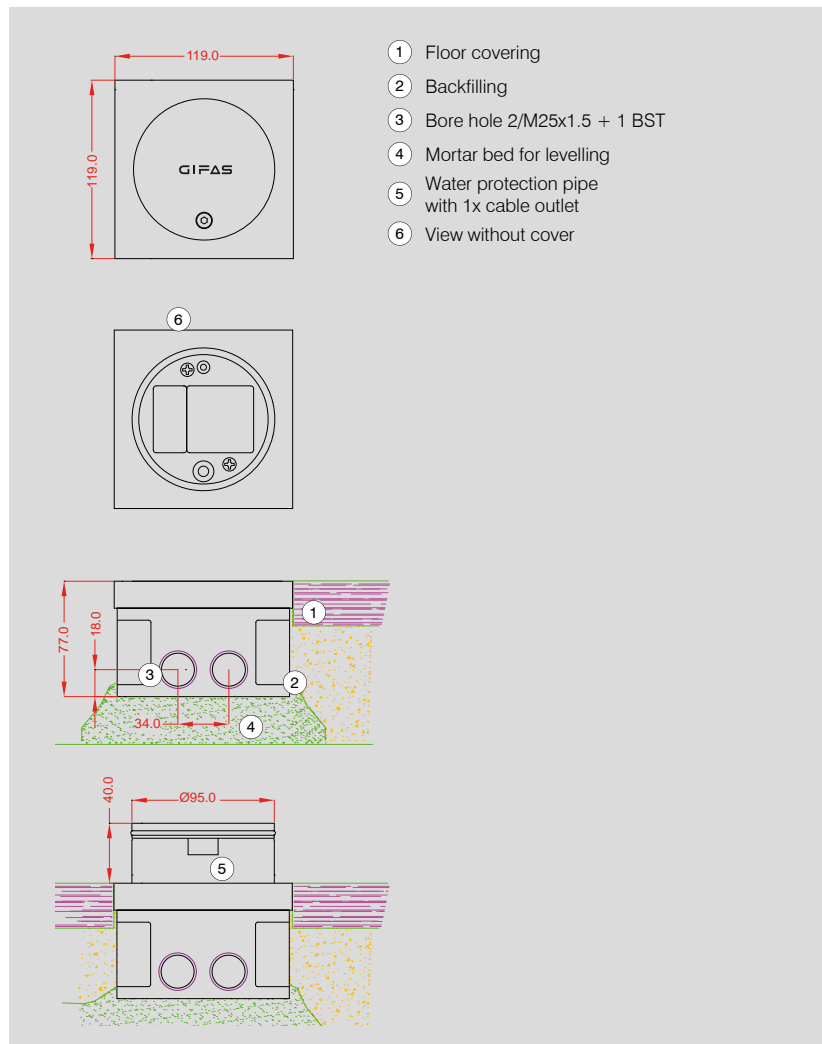
Outer dimensions (L x W):	119 x 119 mm
Installation depth:	77 mm
Material:	Aluminium, natural anodized (resistant to salt- and seawater)

Characteristics

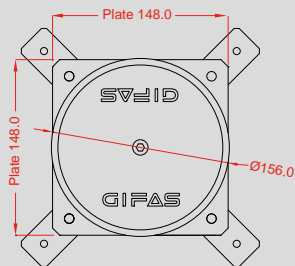
- Floor outlet with hinged cover, to be set at floor level, and outlet pipe (sunk into the floor box when not being used)
- For 1x input 45 x 45 x 4 mm and 1x input 22.5 x 45 x 4 mm (e.g. Schuko, RJ45, etc.)
- Can be travelled over when closed (IP67)
- Suitable for maintenance with wet sweeping devices when closed (IP67) as well as when plugged (with attached outlet pipe, water height maximum 20 mm)
- Non-slip when plugged

EDP No.	Product ID No.
107202	PICCOLISSIMO.E120W.AL.NAT.1X309.M Floor outlet including screw cap, outlet pipe with 2x cable outlets, 1x Schuko plug
107203	PICCOLISSIMO.E120W.AL.NAT.1X309.1RJ45.M Floor outlet including screw cap, outlet pipe with 2x cable outlets, 1x Schuko plug and 1x RJ45
107204	PICCOLISSIMO.E120W.AL.NAT.1XSPEAKON.1RJ45.M Floor outlet including screw cap, outlet pipe with 2x cable outlets, 1x loudspeaker plug type SPEAKON and 1x RJ45

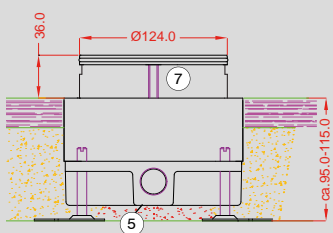
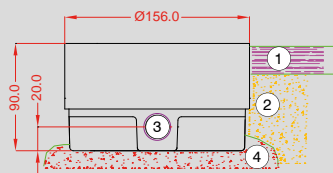
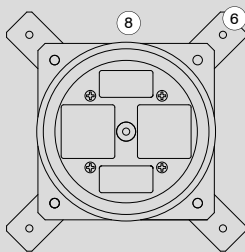
Other equipment options on request.



- 1 Floor covering
- 2 Backfilling
- 3 Bore hole 2/M25x1.5 + 1 BST
- 4 Mortar bed for levelling
- 5 Water protection pipe with 1x cable outlet
- 6 View without cover



- 1 Floor covering
- 2 Backfilling
- 3 Bore hole 2/M32x1,5 + 1 BST
- 4 Mortar bed for levelling
- 5 2 bore holes M32x1.5 + 2BST
- 6 Underside of the housing
- 7 Levelling foot
- 8 Water protection pipe with 2x cable outlets
- 9 View without cover



Floor outlet with screw cap and outlet pipe - for raised indoor areas

Technical data

Outer dimensions (L x W):	148 x 148 mm (panel, levelling foot)
Diameter:	156 mm
Installation depth:	95 up to 115 mm
Material:	Aluminium, natural anodized (resistant to salt- and seawater)

Characteristics

- floor outlet with hinged cover, to be set at floor level, and outlet pipe (sunk into the floor box when not being used)
- for 2x inputs 45 x 45 x 4 mm and 2x inputs 22.5 x 45 x 4 mm (e.g. Schuko, RJ45, etc.)
- can be travelled over when closed (IP67)
- suitable for maintenance with wet sweeping devices when closed (IP67) as well as when plugged (with attached outlet pipe, water height maximum 20 mm)
- non-slip when plugged

EDP No.	Product ID No.
107206	PICCOLISSIMO.R155W.AL.NAT.2X309.M Floor outlet including screw cap, outlet pipe with 2x cable outlets, 2x Schuko plugs
107207	PICCOLISSIMO.R155W.AL.NAT.2X309.1RJ45.M Floor outlet including screw cap, outlet pipe with 2x cable outlets, 2x Schuko sockets and 1x RJ45
107209	PICCOLISSIMO.R155W.AL.NAT.2X309.2RJ45.M Floor outlet including screw cap, outlet pipe with 2x cable outlets, 2x Schuko sockets and 2x RJ45

Other equipment options on request.

Rondissimo E170.1HE



Micro subfloor distributor

Technical data

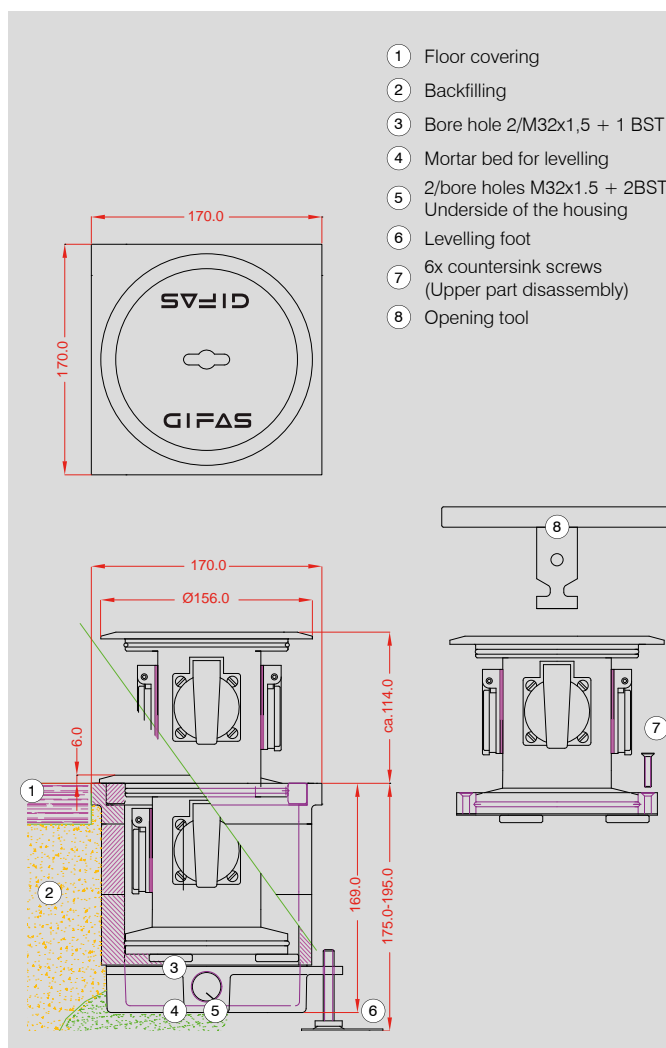
Outer dimensions (L x W): 170 x 170 mm
 Installation depth: 175 up to 195 mm
 Material: Aluminium, natural
 (resistant to salt- and seawater)

Characteristics

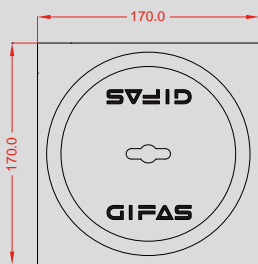
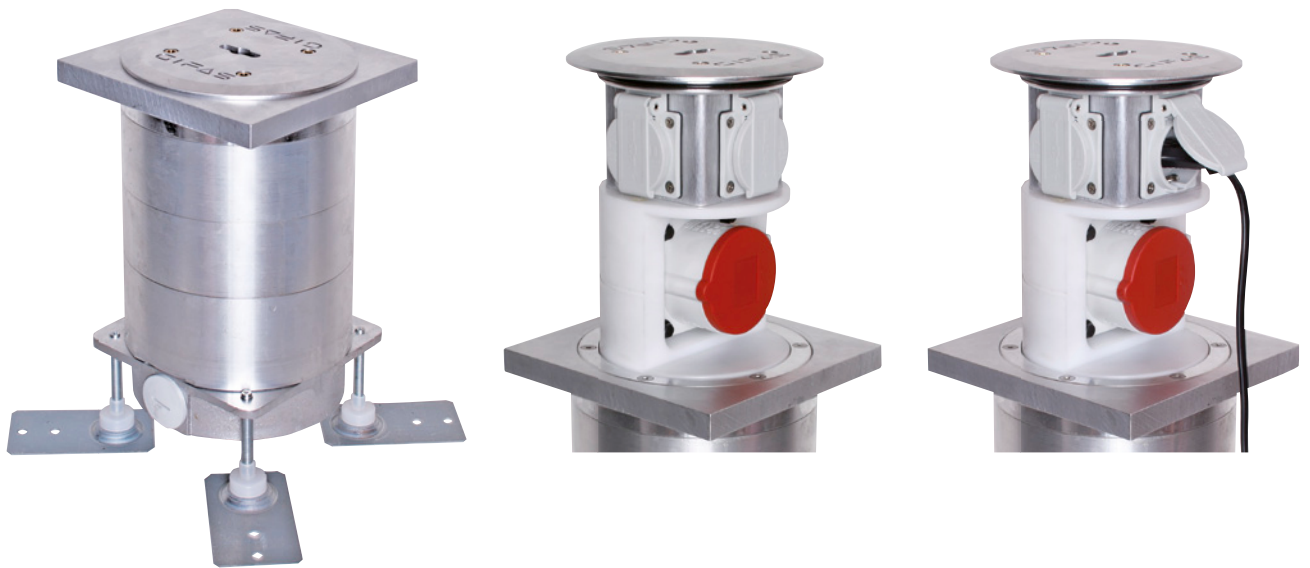
- Micro subfloor distributor to be installed almost level with the floor
- Equipment: see article numbers among others
- when closed:
 - IP67
 - can be travelled over
- when plugged:
 - up to IP54
 - non-slip

EDP No.	Product ID No.
107214	RONDISSIMO.E170.1HE.AL.NAT.4X309.M Micro subfloor distributor with 4x Schuko plugs IP54
107215	RONDISSIMO.E170.1HE.AL.NAT.3X309.2RJ45.M Micro subfloor distributor with 3x Schuko plugs IP54 and 2x RJ45 IP54
107216	RONDISSIMO.E170.1HE.AL.NAT.4X309OD.M Micro subfloor distributor with 4x Schuko plugs without cover

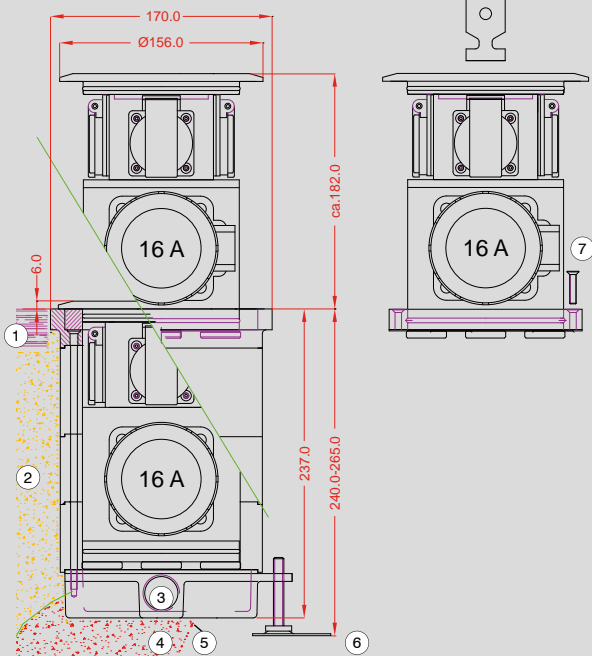
Other equipment options on request.



- 1 Floor covering
- 2 Backfilling
- 3 Bore hole 2/M32x1,5 + 1 BST
- 4 Mortar bed for levelling
- 5 2/bore holes M32x1,5 + 2BST
Underside of the housing
- 6 Levelling foot
- 7 6x countersink screws
(Upper part disassembly)
- 8 Opening tool



- ① Floor covering
- ② Backfilling
- ③ Bore hole 2/M32x1,5 + 1 BST
- ④ Mortar bed for levelling
- ⑤ 2/bore holes M32x1,5 + 2BST
- ⑥ Underside of the housing
- ⑦ Levelling foot
- ⑧ 6x countersink screws (Upper part disassembly)
- ⑨ Opening tool



Micro subfloor distributor

Technical data

Outer dimensions (L x W): 170 x 170 mm
 Installation depth: 240 up to 265 mm
 Material: Aluminium, natural
 (resistant to salt- and seawater)

Characteristics

- Micro subfloor distributor to be installed almost level with the floor
- Equipment: see article numbers among others
- when closed:
 - IP67
 - can be travelled over
- when plugged:
 - up to IP54
 - non-slip

EDP No.	Product ID No.
107219	RONDISSIMO.E170.2HE.AL.NAT.3X309.301659G.M Micro subfloor distributor with 3x Schuko plugs IP54 and 1x CEE 5x16A 400V IP44

Other equipment options on request.

CONTACT US



GIFAS
ELECTRIC

GIFAS-ELECTRIC GmbH Web: www.gifas.at
Pebering-Straß 2 Mail: office@gifas.at
5301 Eugendorf Phone: +43 6225 / 7191 - 0
AUSTRIA Fax: +43 6225 / 7191 - 47

Subject to technical changes V1/2013