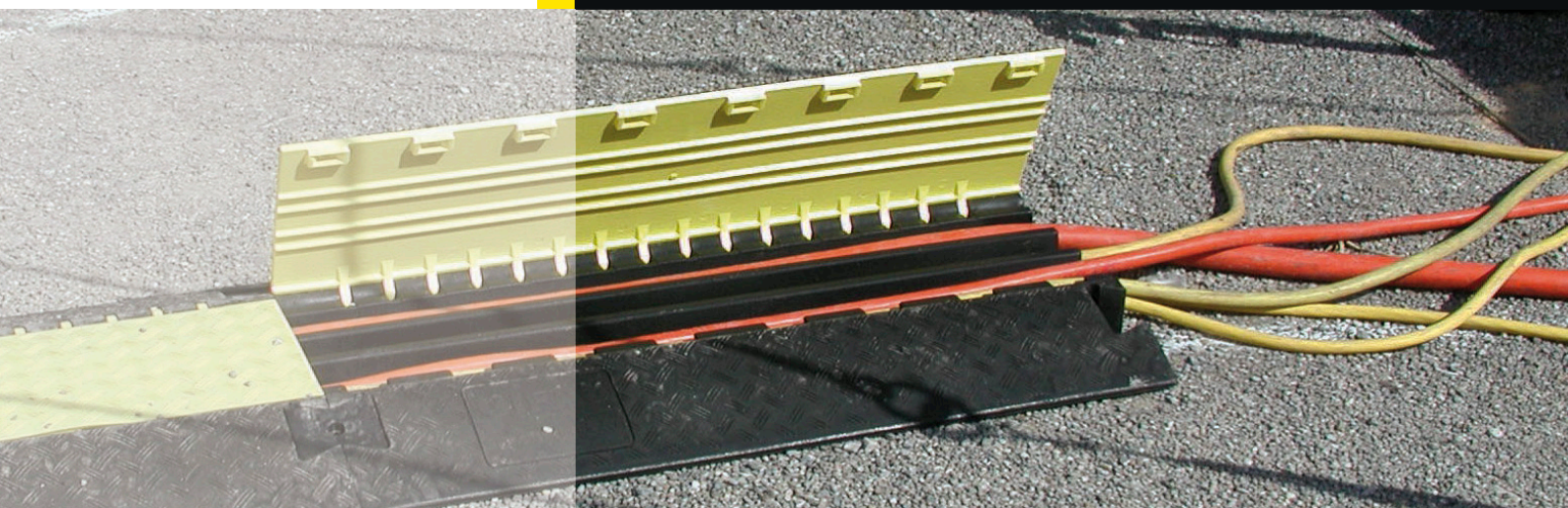


YOUR WISHES SET OUR STANDARDS

Member of the Network

LEITBETRIEBE AUSTRIA
www.leitbetriebe.at

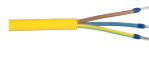
Cables / hose bridges



Cable and cords

Pages 4 - 6

GIFAPLAST-cable



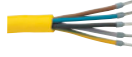
Page 4

GIFAS-Thermoflex-cable



Page 4

GIFAS-Proflexx



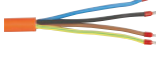
Page 5

GIFAS-PU-Flex



Page 6

GIFAS-Thermoflex-cable



Page 6

Device Connection wires

Page 7

GIFAS-Thermoflex-cord



Page 7

GIFAS-Proflexx-cord



Page 7

Special Cables Cable Printing

Pages 8 - 9

GIFAS-spiral cable



Page 8

GIFAS grounding / earthing cable



Page 8

GIFAS-crane control cable



Page 9

Cable printing



Page 9

Cable bridges hose bridges

Pages 10 - 14

Cable bridge - MEGA



Page 10

Cable bridge - PROTECT



Page 11

Cable bridge - MIDI



Page 11

Cable bridge - PROTECT MINI



Page 12

Cable bridge - MICRO



Page 12

Cable bridge - JUNIOR



Page 13

Application examples

Page 15

Application examples



Page 15

Wires and Cable

Developing new insulating materials for Gifaplus, Proflexx, and GIFAS Thermoflex cables enable the product features to be extensively adapted to the user's requirements.

GIFAPLUS, GIFAS PU-, and Proflexx cables with reinforced outer sheaths are compliant as per the GMSuö standard for heavy-duty rubber hose cables and are thus approved for use on building sites and in areas where explosions are possible.

These cables have a very large scope of application due to the use of advanced insulating materials and specialised manufacturing methods.

Cable Printing:

On request we will print the cable.
(see page 11)

Packaging:

Unless otherwise agreed, the cable lengths are finished on 100 m rings or for larger dimensions, they are wound around a one-way cable reel.

Production lengths:

Depending on the manufacturing method, +/- 10% may be oversupplied/undersupplied for lengths of 500 m and over. Guaranteeing that a specific length is supplied requires a supplemental agreement.

Cable bridge - MINI SUBTERRA Underground cable bridge hose bridge



Page 13

Page 14

Page 14

Cable bridges and hose bridges

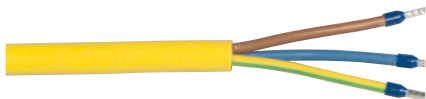
Protect your cable transitions using the GIFAS cable or hose bridge system to avoid accidents and damage.

Ideal for power, gas, water, compressed-air, and hydraulic cables.

These systems tidy up all temporary or permanent sets of cables and make them safe.

The elements can be infinitely extended using integrated or attached connecting plugs.

GIFAPLAST-cable (colour code: luminous yellow / RAL 1021)



Harmonised model, H05VV-F.

Energy cable for connecting electrical appliances, electrical tools and lamps.

Model:

Fine-stranded, flexible copper strands, sheer, wire insulation and outer sheath of special PVC. Wires: cabled concentrically in a single layer.

Use:

Mobile, unprotected cable for heavy-duty outdoor use (e.g. on building sites etc.). It is also authorised for use in explosion-hazardous areas.

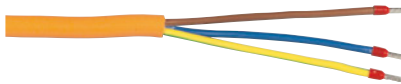
Technical data:

| | |
|-----------------------------------|--|
| Max. tolerable operating voltage: | 300/500V |
| Testing voltage: | 3000V |
| Disruptive discharged voltage: | >6000V |
| Bending radius: | 10-times cable diameter |
| Operating temperature range: | in motion: -15°C up to +70°C at rest: -30°C up to +70°C |

| GIFAPLAST-cable | | | | | |
|-----------------|----------------|----------------------------------|----------------------|-----------------|-----------------|
| EDP No. | Product ID No. | Cross section (mm ²) | Copper no. kg/1000 m | Exterior Ø (mm) | Weight kg/100 m |
| 11494 | 4210 | 2x1.0 | 20.0 | 6.8 | 6.0 |
| 11502 | 4215 | 2x1.5 | 30.0 | 7.6 | 10.0 |
| 11524 | 4225 | 2x2.5 | 50.0 | 9.6 | 12.0 |
| 11551 | 4310 | 3x1.0 | 30.0 | 7.2 | 9.5 |
| 11555 | 4315 | 3x1.5 | 45.0 | 8.3 | 11.0 |
| 11585 | 4325 | 3x2.5 | 75.0 | 9.7 | 15.0 |
| 11611 | 4415 | 4x1.5 | 60.0 | 8.7 | 12.5 |
| 11647 | 4515 | 5x1.5 | 75.0 | 9.5 | 14.5 |
| 11664 | 4525 | 5x2.5 | 125.0 | 12.0 | 23.0 |
| 11703 | 4715.FÜ* | 7x1.5 | 105.0 | 12.7 | 21.5 |

* A05VV-F

GIFAS-Thermoflex-cable finest stranded



Highly flexible control cable, low-temperature flexibility on the basis of H05VV-F.

Energy cable as per VDE 0295 and ÖVE/ÖNORM E 8241.

- high flexibility even at low temperatures
- high UV-resistance

Model:

Fine-stranded highly flexible copper strands, 0.15 mm, sheer, cores: concentrically single-layer cabled, special outer sheath made of thermoplastic rubber.

Technical data:

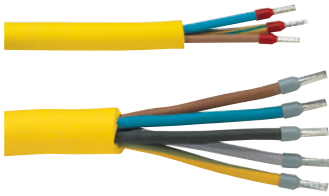
| | |
|-----------------------------------|--|
| Max. tolerable operating voltage: | 500V |
| Testing voltage: | 2000V |
| Disruptive discharged voltage: | >12000V |
| Bending radius: | 5-times cable diameter |
| Operating temperature range: | in motion: -20°C up to +80°C at rest: -35°C up to +80°C |

| GIFAS-Thermoflex-cable | | | | | |
|------------------------|----------------|----------------------------------|----------------------|-----------------|-----------------|
| EDP No. | Product ID No. | Cross section (mm ²) | Copper no. kg/1000 m | Exterior Ø (mm) | Weight kg/100 m |
| 14831 | 4210.TH.H | 2x1.0 | 20.0 | 7.1 | 6.0 |
| 14482 | 4215.TH.H | 2x1.5 | 30.0 | 7.7 | 10.0 |
| 15558 | 4315.TH.H | 3x1.5 | 45.0 | 8.2 | 12.0 |

Free printing of the cable with your company name for orders over 100 m per dimension (see page 11).

Free printing of the cable with your company name for orders over 100 m per dimension (see page 11).

GIFAS-Proflexx



Industrial flexible rubber line H07RN-F of very high quality. These cables have been specifically developed for the demands on building and steel construction sites. They are highly resistant to welding beads and sparks. Moreover they offer high flexibility, resistance to oils, greases, acidic and alkaline substances as well as high mechanical and temperature resistance. Highly resistant against breaking and tearing. The cable can be permanently kept under water.

Model:

Fine-stranded, flexible copper strands, sheer, VDE tested construction, outer sheath of polychloroprene, free of silicone.

Use:

Mobile, unprotected cable for heavy-duty outdoor use (e.g. on building sites etc.). It is also authorised for use in explosion-hazardous areas.

Technical data:

Max. tolerable operating voltage: 750V
 Testing voltage: 2500V
 Bending radius: 4-times cable diameter
 250,000 bending cycles
 Operating temperature range: - 30°C up to + 85°C

| GIFAS-Proflexx-cable | | | | | |
|----------------------|----------------|---------------------|-----------------------|-----------------|------------------|
| EDP No. | Product ID No. | Cross section (mm²) | Copper no. kg/ 1000 m | Exterior Ø (mm) | Weight kg/ 100 m |
| 53270 | 4210.GG | 2x1.0 | 20 | 8.5 | 9.4 |
| 53276 | 4215.GG | 2x1.5 | 30 | 9.0 | 12.0 |
| 53341 | 4225.GG | 2x2.5 | 50 | 11.0 | 17.5 |
| 11557 | 4315.GG | 3x1.5 | 45 | 9.5 | 15.0 |
| 53279 | 4325.GG | 3x2.5 | 75 | 12.0 | 21.5 |
| 53283 | 4415.GG | 4x1.5 | 60 | 12.0 | 19.0 |
| 72160 | 4425.GG | 4x2.5 | 100 | 12.5 | 27.0 |
| 50841 | 4515.GG | 5x1.5 | 75 | 12.2 | 23.0 |
| 11666 | 4525.GG | 5x2.5 | 125 | 14.5 | 32.5 |
| 53187 | 4540.GG | 5x4.0 | 200 | 17.0 | 47.5 |
| 54317 | 4560.GG | 5x6.0 | 300 | 19.0 | 63.0 |
| 80527 | 45100.GG | 5x10.0 | 500 | 27.2 | 84.0 |
| 50485 | 45160.GG | 5x16.0 | 800 | 28.5 | 153.0 |

Free printing of the cable with your company name for orders over 100 m per dimension (see page 11).



| Solid rubber Schuko-extension | | | | |
|-------------------------------|------------------|---------------------|-----------------|--------|
| EDP No. | Product ID No. | Cross section (mm²) | Plug + Coupling | Length |
| 52775 | 111.10315.GG.211 | 3x1.5 | Schuko | 10 m |
| 74063 | 111.10325.GG.211 | 3x2.5 | Schuko | 10 m |
| 65977 | 111.15315.GG.211 | 3x1.5 | Schuko | 15 m |
| 81387 | 111.15325.GG.211 | 3x2.5 | Schuko | 15 m |
| 64919 | 111.25315.GG.211 | 3x1.5 | Schuko | 25 m |
| 61754 | 111.25325.GG.211 | 3x2.5 | Schuko | 25 m |
| 66820 | 111.50315.GG.211 | 3x1.5 | Schuko | 50 m |
| 61755 | 111.50325.GG.211 | 3x2.5 | Schuko | 50 m |



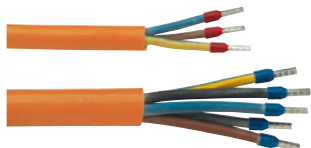
| Solid rubber CEE-extension | | | | |
|----------------------------|---------------------|---------------------|-----------------|--------|
| EDP No. | Product ID No. | Cross section (mm²) | Plug + Coupling | Length |
| 77653 | 301656.15525.GG.57 | 5x2.5 | CEE 5x16A | 15 m |
| 76820 | 303256.15540.GG.57 | 5x4.0 | CEE 5x32A | 15 m |
| 108366 | 303256.15560.GG.57 | 5x6.0 | CEE 5x32A | 15 m |
| 79808 | 306356.155160.GG.57 | 5x16.0 | CEE 5x63A | 15 m |
| 61756 | 301656.25525.GG.57 | 5x2.5 | CEE 5x16A | 25 m |
| 51814 | 303256.25540.GG.57 | 5x4.0 | CEE 5x32A | 25 m |
| 76337 | 303256.25560.GG.57 | 5x6.0 | CEE 5x32A | 25 m |
| 70839 | 306356.255160.GG.57 | 5x16.0 | CEE 5x63A | 25 m |
| 61757 | 301656.50525.GG.57 | 5x2.5 | CEE 5x16A | 50 m |
| 83420 | 303256.50540.GG.57 | 5x4.0 | CEE 5x32A | 50 m |
| 103904 | 303256.50560.GG.57 | 5x6.0 | CEE 5x32A | 50 m |
| 78575 | 306356.505160.GG.57 | 5x16.0 | CEE 5x63A | 50 m |



| Plastic CEE-extension | | | | |
|-----------------------|--------------------------|---------------------|-----------------|--------|
| EDP No. | Product ID No. | Cross section (mm²) | Plug + Coupling | Length |
| 108360 | 301656HG.15525.GG.57 | 5x2.5 | CEE 5x16A | 15 m |
| 108363 | 303256HG.15540.GG.57 | 5x4.0 | CEE 5x32A | 15 m |
| 108367 | 303256HG.15560.GG.57 | 5x6.0 | CEE 5x32A | 15 m |
| 108372 | 306356HG.155160.GG.57.WD | 5x16.0 | CEE 5x63A | 15 m |
| 108361 | 301656HG.25525.GG.57 | 5x2.5 | CEE 5x16A | 25 m |
| 108364 | 303256HG.25540.GG.57 | 5x4.0 | CEE 5x32A | 25 m |
| 108368 | 303256HG.25560.GG.57 | 5x6.0 | CEE 5x32A | 25 m |
| 108370 | 306356HG.255160.GG.57.WD | 5x16.0 | CEE 5x63A | 25 m |
| 108362 | 301656HG.50525.GG.57 | 5x2.5 | CEE 5x16A | 50 m |
| 108365 | 303256HG.50540.GG.57 | 5x4.0 | CEE 5x32A | 50 m |
| 108369 | 303256HG.50560.GG.57 | 5x6.0 | CEE 5x32A | 50 m |
| 108371 | 306356HG.505160.GG.57.WD | 5x16.0 | CEE 5x63A | 50 m |

Waterproof IP67 design, phase inverter, different lengths, etc. available on request.

GIFAS-PU-Flex



For dry, damp and wet surroundings under mid-level mechanical strain. Good abrasion resistance of the outer sheath. Resistant against fuel and oil, diluted acids and caustics. To be used in building, farming, the chemical industry, sewage treatment plants, paper mills and similar.

- Ozone and weather resistant -excellent tear strength and tear resistance
-excellent flexibility - superior mechanical resistance -halogen-free insulation.

Model:

Fine stranded, flexible copper strands, rubber insulated cores. VDE tested flame resistant construction outer sheath of polyurethane.

Technical data:

| | |
|-----------------------------------|--------------------------|
| Max. tolerable operating voltage: | 750V |
| Testing voltage: | 3000V |
| Bending radius: | 7.5 times cable diameter |
| Operating temperature range: | -40°C up to +90°C |

GIFAS-PU-Flex-cable

| EDP No. | Product ID No. | Cross section (mm ²) | Copper no. kg/ 1000 m | Outside Ø (mm ²) | Weight kg/ 100 m |
|---------|----------------------|----------------------------------|-----------------------|------------------------------|------------------|
| 53278 | 4215.PU.GUIL.H07BQ-F | 2x1.5 | 30 | 8.5 | 8.9 |
| 53118 | 4315.PU.GUIL.H07BQ-F | 3x1.5 | 45 | 9.0 | 10.9 |
| 53282 | 4325.PU.GUIL.H07BQ-F | 3x2.5 | 75 | 10.5 | 15.9 |
| 53286 | 4515.PU.GUIL.H07BQ-F | 5x1.5 | 75 | 11.0 | 17.1 |
| 53287 | 4525.PU.GUIL.H07BQ-F | 5x2.5 | 125 | 13.7 | 25.0 |
| 53292 | 4540.PU.GUIL.H07BQ-F | 5x4.0 | 200 | 15.5 | 40.6 |
| 53294 | 4560.PU.GUIL.H07BQ-F | 5x6.0 | 300 | 17.5 | 53.6 |

Free printing of the cable with your company name for orders over 100 m per dimension (see page 11).

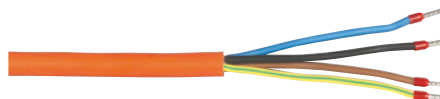


Plastic CEE-extension

| EDP No. | Product ID No. | Cross section (mm ²) | Plug + Coupling | Length |
|---------|----------------------|----------------------------------|-----------------|--------|
| 108415 | 301656HG.15525.PU.57 | 5x2.5 | CEE 5x16A | 15 m |
| 108418 | 303256HG.15540.PU.57 | 5x4.0 | CEE 5x32A | 15 m |
| 108421 | 303256HG.15560.PU.57 | 5x6.0 | CEE 5x32A | 15 m |
| 108416 | 301656HG.25525.PU.57 | 5x2.5 | CEE 5x16A | 25 m |
| 108419 | 303256HG.25540.PU.57 | 5x4.0 | CEE 5x32A | 25 m |
| 108422 | 303256HG.25560.PU.57 | 5x6.0 | CEE 5x32A | 25 m |
| 108417 | 301656HG.50525.PU.57 | 5x2.5 | CEE 5x16A | 50 m |
| 108420 | 303256HG.50540.PU.57 | 5x4.0 | CEE 5x32A | 50 m |
| 108423 | 303256HG.50560.PU.57 | 5x6.0 | CEE 5x32A | 50 m |

Waterproof IP67 design, phase inverter, different lengths, etc. available upon request.

GIFAS-Thermflex-cable



Highly resistant to chemicals (ozone, oils, fat, many acids and caustics). The high mechanical resistance guarantees a very long serviceable life.

Model:

Fine copper strands, bare, under VDE 0295 category 5.

Insulation:

Cross-linked polyurethane under VDE 207 part 24 HI 2 flame resistant. Outer sheath of cross-linked polyurethane under VDE 0207 part 24 HM2. Orange outside cover.

Fire performance:

Slight fire propagation, Minimal smoke development, Halogen-free, Silicon-free, oil-resistant, flame-resistant

Uses / application areas:

As a connecting or interconnecting cable
- Chemical factories - steel and aluminium plants, - paper mills,
- pharmaceutical industry - engineering, - automobile industry.

Technical data:

| | |
|------------------------------|-------------------------|
| Bending radius: | 10 times cable diameter |
| Temperature range in motion: | -20°C up to +130°C |
| Temperature range, fixed: | -35°C up to +130°C |
| Rated voltage: | 300 / 500V |
| Testing voltage: | 3000V |

GIFAS-Thermflex-cable

| EDP No. | Product ID No. | Cross section (mm ²) | Copper no. kg/ 1000 m | Outside Ø (mm ²) | Weight kg/ 100 m |
|---------|----------------|----------------------------------|-----------------------|------------------------------|------------------|
| 11507 | 4215.HHFL | 2x1.5 | 30 | 6.4 | 8.5 |
| 11550 | 43075.HHFL | 3x0.75 | 22.5 | 5.9 | 6.0 |
| 11571 | 4315.HHFL | 3x1.5 | 45 | 6.8 | 9.2 |
| 27535 | 4325.HHFL | 3x2.5 | 75 | 8.3 | 15.3 |
| 11616 | 4415.HHFL | 4x1.5 | 60 | 7.6 | 11.5 |
| 11629 | 4425.HHFL | 4x2.5 | 100 | 9.2 | 18.5 |
| 11655 | 4515.HHFL | 5x1.5 | 75 | 8.3 | 15.0 |
| 11671 | 4525.HHFL | 5x2.5 | 125 | 10.1 | 23.0 |
| 26989 | 4715.HHFL | 7x1.5 | 105 | 10.0 | 23.5 |

Free printing of the cable with your company name for orders over 100 m per dimension (see page 11).

GIFAS-Thermoflex-cord



Model:

Thermoflex cable especially fine stranded, highly flexible wires. With non-rewireable contour or Schuko plug 16A 230V with double earthing system.

On the other end the insulation is 50 mm stripped and the leads are equipped with end sleeves.

GIFAS-Proflexx-cord



Model:

Proflexx cables with round pin attachment plug or Schuko plug 26A 230V, unilaterally fed, splash-proof and with a double earthing protection system.

On the other end the insulation is 50 mm stripped and the leads are equipped with end sleeves.

| Thermoflex-Device connection cable | | | | |
|------------------------------------|----------------|---------------------|---|--------|
| EDP No. | Product ID No. | Cross section (mm²) | Plug | Length |
| 25314 | K.3.4210.TH.H | 2x1.0 | contour plug 16A 230V for protected double insulated appliances | 3 m |
| 25320 | K.5.4210.TH.H | 2x1.0 | | 5 m |
| 25313 | K.10.4210.TH.H | 2x1.0 | | 10 m |
| 25335 | K.3.4215.TH.H | 2x1.5 | contour plug 16A 230V for protected double insulated appliances | 3 m |
| 25348 | K.5.4215.TH.H | 2x1.5 | | 5 m |
| 25328 | K.10.4215.TH.H | 2x1.5 | | 10 m |
| 25360 | S.3.4315.TH.H | 3x1.5 | Schuko plug 16A 230V | 3 m |
| 25361 | S.5.4315.TH.H | 3x1.5 | | 5 m |
| 25316 | S.10.4315.TH.H | 3x1.5 | | 10 m |

For orders of 25 pieces or more we print your company's name on the cords.(see page 11).

| Proflexx-Device connection cable | | | | |
|----------------------------------|----------------|---------------------|---|--------|
| EDV-Nr. | Product ID No. | Cross section (mm²) | Plug | Length |
| 50654 | K.3.4210.GG | 2x1.0 | contour plug 16A 230V for protected double insulated appliances | 3 m |
| 50655 | K.5.4210.GG | 2x1.0 | | 5 m |
| 50656 | K.10.4210.GG | 2x1.0 | | 10 m |
| 50657 | K.3.4215.GG | 2x1.5 | contour plug 16A 230V for protected double insulated appliances | 3 m |
| 50658 | K.5.4215.GG | 2x1.5 | | 5 m |
| 50659 | K.10.4215.GG | 2x1.5 | | 10 m |
| 50660 | S.3.4315.GG | 3x1.5 | Schuko plug 16A 230V | 3 m |
| 50661 | S.5.4315.GG | 3x1.5 | | 5 m |
| 50662 | S.10.4315.GG | 3x1.5 | | 10 m |

For orders of 25 pieces or more we print your company's name on the cords.(see page 11).



The GIFAS device connection cabling and the accompanying GIFAS built-in plug sockets, plugged, IPX4.

As per standard DIN VDE 0100 and ÖVE/ÖNORM E 8001, building sites, temporary appliances, damp and wet rooms, agricultural facilities, outdoor facilities, marinas, swimming baths and similar areas etc.

GIFAS-spiral cable



Model:

Spiral cable with 200 mm straight ends on both sides, 40 mm stripped leads with end sleeves for strands.

Outer sheath: Polyurethane

Lead insulation: PVC

Technical data:

Temperature range: - 30°C to + 80°C

Rated voltage: 300 / 500V up to 1.0 mm²
450 / 750V from 1.5 mm²

Testing voltage: 3000V

| GIFAS-spiral cable | | | | | |
|--------------------|----------------|----------------------------------|---------------|------------------------|----------------------------|
| EDP No. | Product ID No. | Cross section (mm ²) | Spiral-length | Stretched length appr. | Colour of outside covering |
| 10455 | SPK.0,9.4210 | 2x1.0 | 0.9 m | 3.0 m | black |
| 10477 | SPK.0,6.4215 | 2x1.5 | 0.6 m | 2.0 m | yellow |
| 10458 | SPK.0,9.4315 | 3x1.5 | 0.9 m | 3.0 m | black |
| 10451 | SPK.0,6.44075 | 4x0.75 | 0.6 m | 2.0 m | black |
| 20156 | SPK.0,5.4515 | 5x1.5 | 0.5 m | 4.0 m | yellow |

| GIFAS-sided spiral cable with molded angle plug | | | | | |
|---|-----------------|----------------------------------|---------------|------------------------|----------------------------|
| EDP No. | Product ID No. | Cross section (mm ²) | Spiral-length | Stretched length appr. | Colour of outside covering |
| 10456 | SPK.0,9.4210.WS | 2x1.0 | 0.9 m | 3.0 m | black |
| 10459 | SPK.0,9.4315.WS | 3x1.5 | 0.9 m | 3.0 m | black |

Other dimensions and lengths on request.

GIFAS-Spiral cable grounding / earthing cable



Special features:

The outer sheath (green/yellow) of the GIFAS-Spiral cable grounding is made of Polyether-Polyurethane. Thus it contains no Cadmium, FCKW, Halogen or Silicone. The outer sheath is oil resistant acc. to VDE 0472 part 803, seawater-resistant, shatterproof and impact-resistant, termite-resistant, ozone-resistant and to a great extent resistant against acids, caustics and solvents.

Special characteristics are low weight as well as resistance against temperature and corrosion. The wire is characterised by its resistance against shock and impact at high and low temperatures and a good resistance against pressure despite a relatively thin coating.

Application:

- control-, measuring and laboratory engineering – chemical industry
– medicine and electrical engineering – automobile industry – apparatus engineering – pneumatic and hydraulic industry – foodstuff industry

Technical data:

Temperature range: -40°C bis +80°C (short-time +100°C)

Operating voltage: 1000V

Testing voltage: 3,500V

Stranding: finest stranded, category 6

Single strand: EL Cu 58 F 21 blank soft

Conductor resistance: in accordance with DIN VDE 0295, IEC 60228

Cable diameter: 10 mm

Spiral length: approx. 600 mm

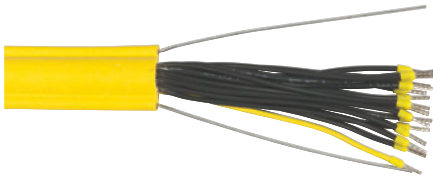
Stretched length: approx. 5,000 mm

| GIFAS-Earthing cable Chromium plated | | |
|--------------------------------------|----------------------------------|----------------------------------|
| EDP No. | Product ID No. | Cross section (mm ²) |
| 74614 | SPK.ERD.5M.4160.GN.GE.608.KS.M8 | 6 |
| 74613 | SPK.ERD.5M.4160.GN.GE.2x608 | 6 |
| 74618 | SPK.ERD.5M.41100.GN.GE.608.KS.M8 | 10 |
| 74615 | SPK.ERD.5M.41100.GN.GE.2x608 | 10 |

| GIFAS-Earthing cable stainless steel | | |
|--------------------------------------|---------------------------------------|----------------------------------|
| EDP No. | Product ID No. | Cross section (mm ²) |
| 77971 | SPK.ERD.5M.4160.GN.GE.608.INOX.KS.M8 | 6 |
| 75849 | SPK.ERD.5M.4160.GN.GE.2X608.INOX | 6 |
| 75848 | SPK.ERD.5M.41100.GN.GE.608.INOX.KS.M8 | 10 |
| 77972 | SPK.ERD.5M.41100.GN.GE.2X608.INOX | 10 |

| GIFAS-Earthing cable (sold by the metre) | | | |
|--|----------------|----------------------------------|-----------------------|
| EDP No. | Product ID No. | Cross section (mm ²) | Copper no. kg/ 1000 m |
| 106306 | 41160.GN/GE | 16.0 | 160 |

GIFAS-crane control cable



Crane and lift control cables
PVC outer sheath also flexible at low temperatures with two supporting steel wires which are integrated in the covering.

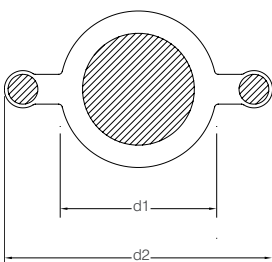
Application:

- For control- and pushbuttons on cranes and conveyors
- Steel plants
- As freely suspended wires
- On high bay racks

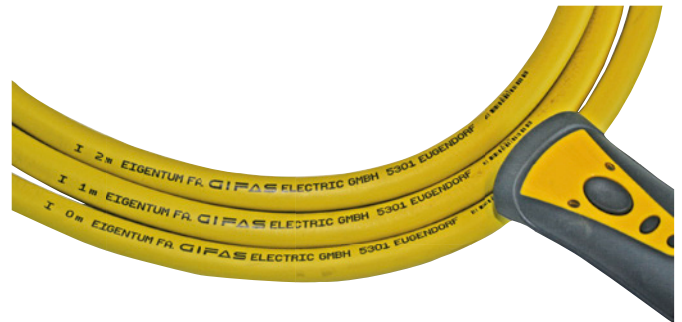
Technical data:

Lead identification: uni coloured, continuously numbered according to VDE 0293, with earthing conductor
 Temperature range in motion: - 30°C up to + 70°C
 Temperature range at rest: - 40°C up to + 70°C
 Bending radius: forward-backward bending 12x cable diameter
 Maximum tolerable operating voltage: 500V
 Testing voltage: 3000V
 Insulating resistance: min. 20MΩ
 Carrying capacity: up to 135kg absolutely safe, the critical point is 190 kg (own weight of the cable must be considered)

| GIFAS-crane control cable | | | | | |
|---------------------------|----------------|----------------------------------|-----------------------|----------------------|------------------|
| EDP No. | Product ID No. | Cross section (mm ²) | Copper no. kg/ 1000 m | Outside Ø (mm) d1 d2 | Weight kg/ 100 m |
| 44530 | 41210.2TY | 12x1.0 | 120 | 14.9 / 27.3 | 44.6 |
| 44532 | 41810.2TY | 18x1.0 | 180 | 17.0 / 32.0 | 52.8 |
| 44534 | 42510.2TY | 25x1.0 | 250 | 21.0 / 36.0 | 66.0 |



Cable Printing



Bulk Cables printing options:

We print your cable free when you order a minimum quantity of 100 feet per dimension

- Company name
- Metering
- Harmonised cable type identification (e.g. H07RN-F 5G2.5).

For an additional charge we can print your cable from an order of 100 m per dimension also

- Company Logo (the customer is able to preview the print in, black / white, jpg format, at least 100 dpi)
- Inventory Number
- Bar code

Device-connector sets printing options:

For an additional charge we can print your with an order of at least 25 pieces per dimension, when purchased with cables

- Company Name
- Harmonised cable type identification (e.g. H07RN-F 5G2.5).

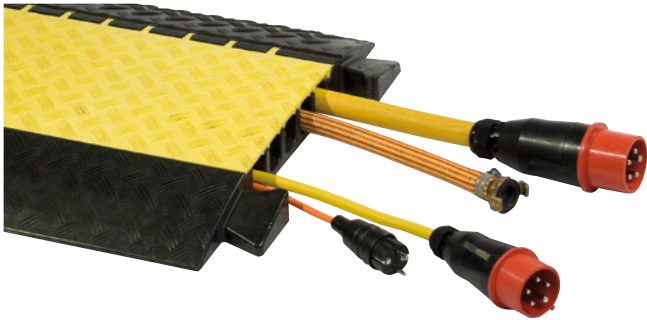
- Logos (the customer is able to preview the print in, black / white, jpg format, at least 100 dpi)
- Inventory Number
- Bar code

Advantages:

- no confusion
- theft protection
- Easy to trim
- Cable length is checked
- Clearly classified in accordance with standard ÖVE/ÖNORM E 8701 and DIN VDE 0701 / 0702.

| Cable Printing | | |
|----------------|----------------------------------|--|
| EDP No. | Product ID No. | Description |
| 104564 | INKJET.AUFD RUCK.LOGO | Black print, customer logo on presentation |
| 104565 | INKJET.AUFD RUCK. INVENTARNUMMER | Black print, Inventory number after submission |
| 104566 | INKJET.AUFD RUCK.BAR-CODE | Black print, Barcode after submission |

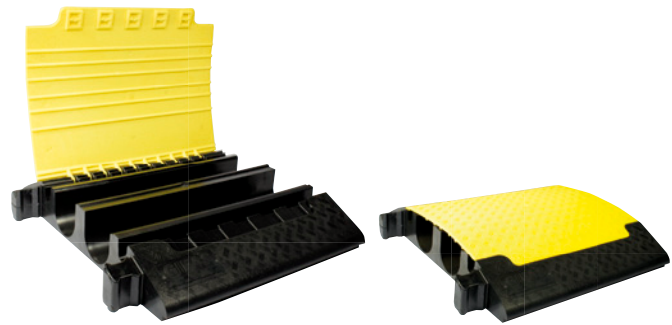
Cable bridges and hose bridge



The main assets at a glance

- Easy installation due to plug-in system
- Versatile in use
- Endlessly extendable
- Easy to retrofit
- Unbreakable
- Highly loadable
- Abrasion proof
- Non-slipping
- Insulating
- Temperature resistant
- Weather resistant
- Resistant against solvents, fuel, oil and salt resistant
- Longevity

Cable bridge - MEGA



Technical data

| | |
|-----------------------|----------------------------------|
| Material: | Polyurethane |
| Cable channels: | Number: 4 channels |
| | Width: 35 / 120 / 120 / 35 mm |
| | Height: 50 / 113 / 113 / 50 mm |
| Dimensions L x W x H: | 700 x 783 x 139 mm |
| Weight: | approx. 30.5 kg |
| Loading pressure: | to 6 t / 400 mm ² |
| Fire resistance: | in accordance with DIN 4102 – B2 |

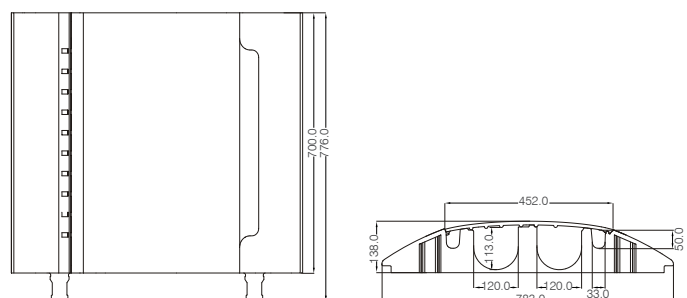
Cable bridge - MEGA

| EDP No. | Prod. ID-No. |
|---------|------------------------------|
| 81902 | KABELBRÜCKE.750.700.145.MEGA |

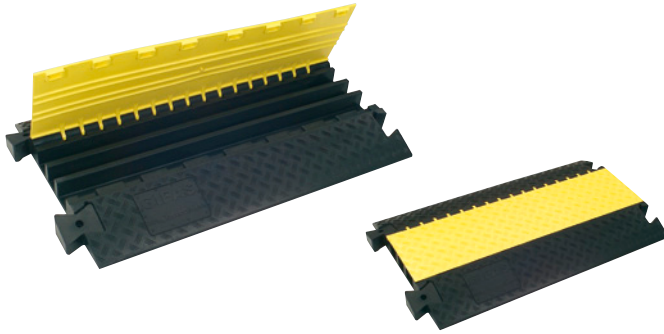
GIFAS-Cable bridges hose bridges

to be used everywhere and for every purpose

- building sites
- streets
- boardwalks
- public areas
- entertainment districts
- showman
- fairgrounds
- concert halls
- festivity- and sports grounds
- open-air events
- radio, film and television
- production facilities
- company areas
- airports
- ports
- disaster operations
- military
- fire department
- and much more



Cable bridge - PROTECT



Technical data

Material under part / upper part: Polyurethane (black) / Polyethylene (yellow)

Cable channels: Number: 3 channels
Width: 53 / 46 / 58 mm
Height: 50 mm

Dimensions L x W x H: 1000 x 600 x 75 mm

Weight: approx. 22 kg

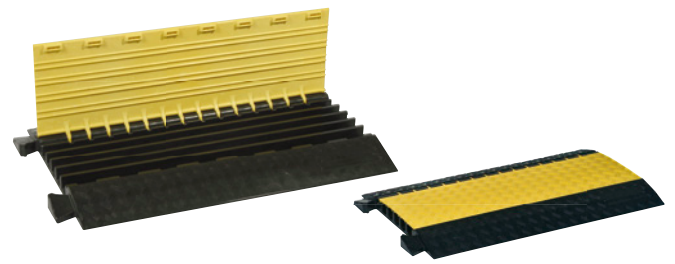
Loading pressure: 5 t / 400 mm²

Fire resistance: in accordance with DIN 4102 – B2

Cable bridges - Protect

| EDP No. | Prod. ID-No. |
|---------|--|
| 67898 | KABELBRÜCKE.1000.600.75.PROTECT Cable bridges including 2 connecting pins |

Cable bridge - MIDI



Technical data

Material: Polyurethane

Cable channels: Number: 5 channels
Width: 35 mm
Height: 36 mm

Dimensions L x W x H: 870 x 535 x 55 mm

Weight: approx. 12 kg

Loading pressure: to 5 t / 400 mm²

Fire resistance: in accordance with DIN 4102 – B2

Cable bridges - Midi

| EDP No. | Prod. ID-No. |
|---------|-----------------------------|
| 72205 | KABELBRÜCKE.880.540.55.MIDI |

PROTECT Cable bridge accessories



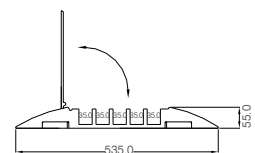
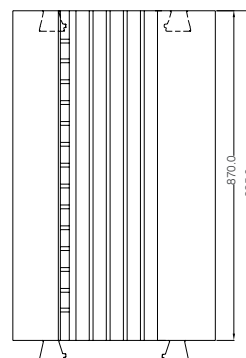
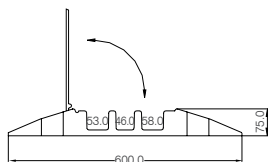
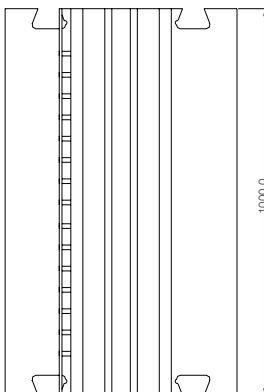
End ramp with cable outlet
– reducing hazard of tripping



connecting plugs
(1 pair as spare part)

Accessories Cable bridges - Protect

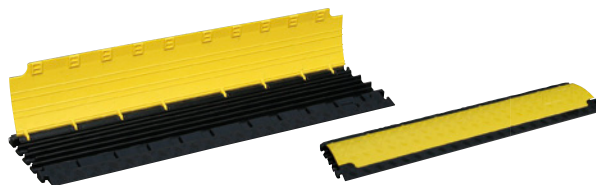
| EDP No. | Prod. ID-No. |
|---------|--|
| 67899 | KABELBRÜCKE.ENDSTÜCK.PROTECT |
| 67940 | KABELBRÜCKE.VERBINDUNGSZAPFEN.GIFAS.1P |



Cable bridge - PROTECT MINI



Cable bridge - MICRO



Technical data

Material: Polyurethane
 Cable channels: Number: 3 channels
 Width: 35 mm
 Height: 30 / 35 / 30 mm
 Dimensions L x W x H: 1000 x 290 x 48 mm
 Weight: approx. 6 kg
 Loading pressure: to 2 t / 400 mm²
 Fire resistance: in accordance with DIN 4102 – B2

Technical data

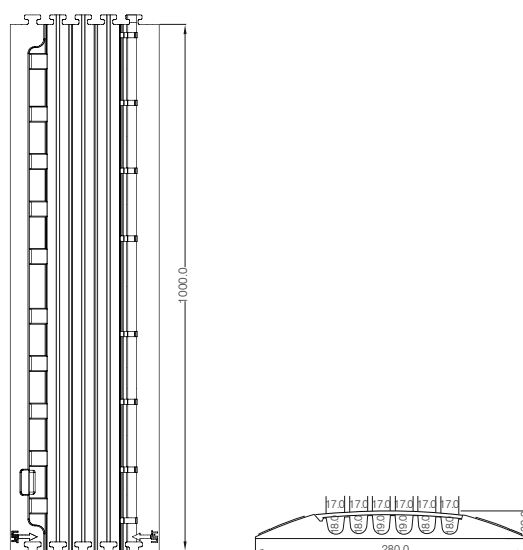
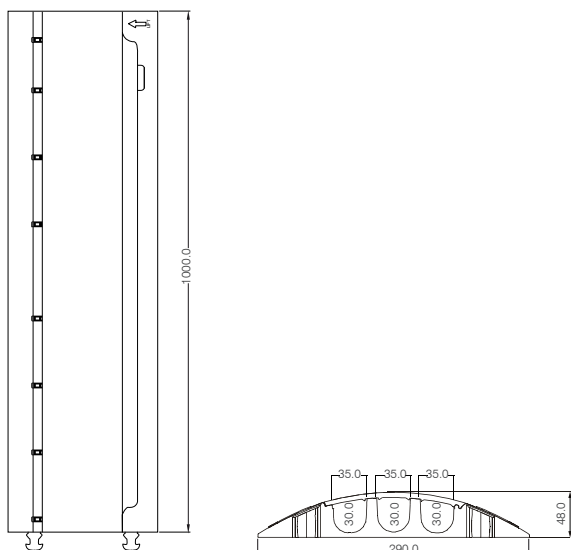
Material: Polyurethane
 Cable channels: Number: 6 channels
 Width: 17 mm
 Height: 18 / 18 / 19 / 19 / 18 / 18 mm
 Dimensions L x W x H: 1000 x 280 x 32 mm
 Weight: approx. 4.4 kg
 Loading pressure: to 2 t / 400 mm²
 Fire resistance: in accordance with DIN 4102 – B2

Cable bridge - Protect Mini

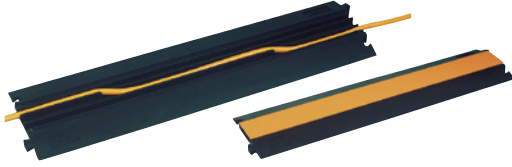
| EDP No. | Prod. ID-No. |
|---------|--------------------------------------|
| 86042 | KABELBRÜCKE.1000.290.48.PROTECT.MINI |

Cable bridge - Micro

| EDP No. | Prod. ID-No. |
|---------|-------------------------------|
| 89207 | KABELBRÜCKE.1000.280.32.MICRO |



Cable bridge - JUNIOR



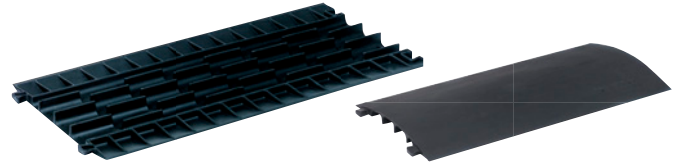
Technical data

Material under part / cover: Polyurethane / ABS
 Cable channels: Number: 3 channels
 Width: 17 / 23 / 17 mm
 Height: 24 mm
 Dimensions L x W x H: 1000 x 250 x 34 mm
 Weight: approx. 2.4 kg
 Loading pressure: to 680 kg / 400 mm²
 Fire resistance: class 1 UNI 9174 und UNI 8457

Cable bridge - Junior

| EDP No. | Prod. ID-No. |
|---------|-------------------------------|
| 61677 | KABELBRÜCKE.1000.250.3.JUNIOR |

Cable bridge - MINI

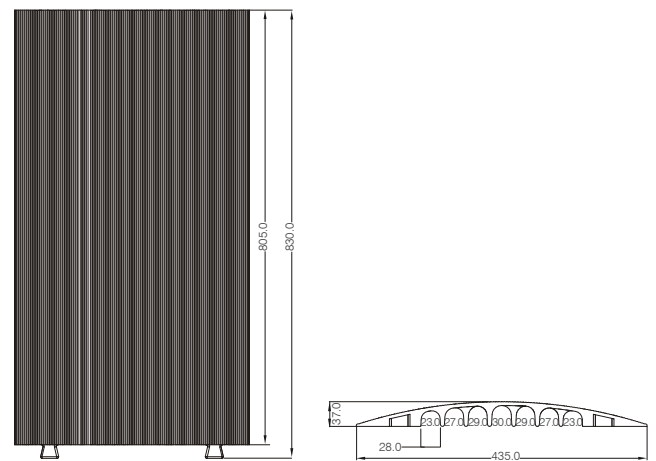
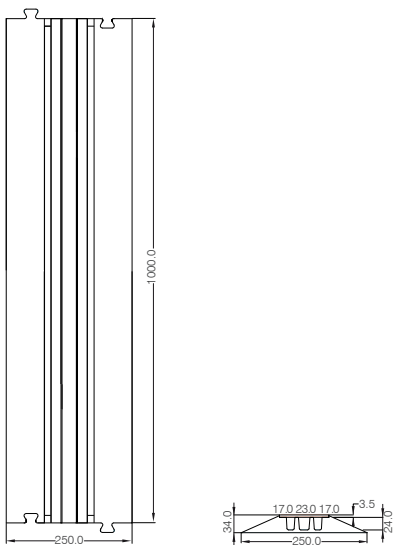


Technical data

Material: thermoplastic Polyurethane
 Cable channels: Number: 7 channels
 Width: 28 mm
 Height: 23 / 27 / 29 / 30 / 29 / 27 / 23
 Dimensions L x W x H: 805 x 435 x 37 mm
 Weight: approx. 3.5 kg
 Loading pressure: Pedestrians and Bicycles

Cable bridge - Mini

| EDP No. | Prod. ID-No. |
|---------|-----------------------------|
| 72948 | KABELBRÜCKE.800.435.40.MINI |



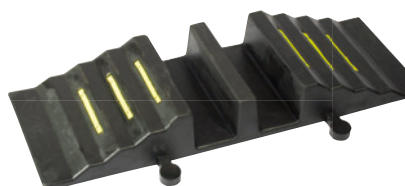
SUBTERRA Underground cable bridge



Technical data

Material: polyamide / Polyurethane
 Cable channels: Number: 1 channels
 Width: 113 mm
 Height: 100 mm
 Dimensions L x W x H: 760 x 570 x 150 mm
 Weight: approx. 14 kg
 Loading pressure: to 9 t / 400 cm²
 Fire resistance: in accordance with DIN 4102 – B2

hose bridge



Technical data

Material: Hard rubber
 Cable channels: Number: 2 channels
 Width: 80 mm
 Height: 90 mm
 Dimensions L x W x H: 860 x 300 x 110 mm
 Weight: approx. 11 kg
 Loading pressure: 40 t
 Model: similar DIN 14820
 Angle of gradient: approx. 15°

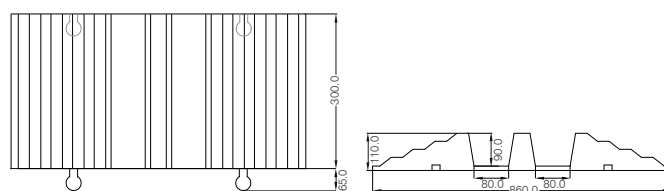
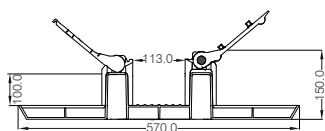
For fire brigades for laying out B and C hoses.

Cable bridge - SUBTERRA

| EDP No. | Prod. ID-No. |
|---------|----------------------------------|
| 84237 | KABELBRÜCKE.760.570.150.SUBTERRA |

hose bridges

| EDP No. | Prod. ID-No. |
|---------|-------------------------------|
| 84066 | SCHLAUCHBRÜCKE.860X300X90.40T |



Application examples / Customer Solutions



CONTACT US



GIFAS
ELECTRIC

GIFAS-ELECTRIC GmbH Web: www.gifas.at
Pebering-Straß 2 Mail: office@gifas.at
5301 Eugendorf Phone: +43 6225 / 7191 - 0
AUSTRIA Fax: +43 6225 / 7191 - 47

Subject to technical changes V06/2014