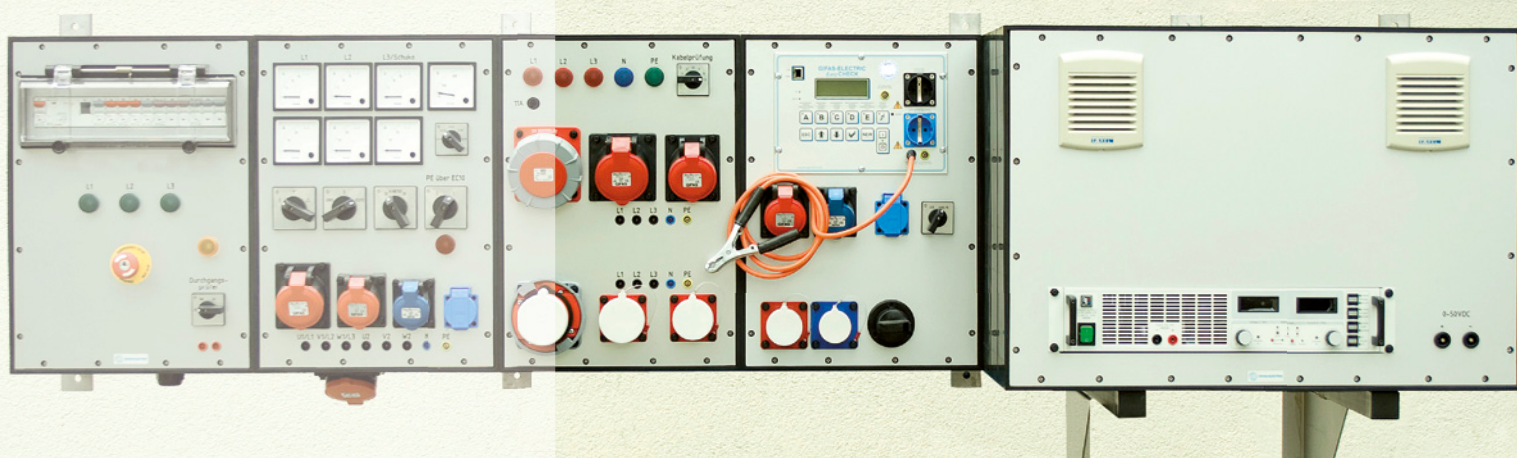


YOUR WISHES SET OUR STANDARDS

Testing and measuring equipment

Member of the Network



EasyCHECK

Page 4



Page 4

Portable testing and measuring equipment

Pages 5 - 7



Page 5



Page 6



Page 7

Stationary and portable function and safety testing

Page 8



Page 8

Testing adapter accessories

Pages 9 - 11



Page 9



Page 10



Page 11

Application examples

Pages 12 - 13

Application examples



Pages 12 - 13

By introducing the EasyCHECK, GIFAS ELECTRIC GmbH reacted to changes in standards (testing after maintenance and alterations in addition to periodical checks on electrical appliances ÖVE/ÖNORM E 8701-1, ÖVE/ÖNORM E 8701-2-2 and DIN VDE 0701; DIN VDE 0702).

The EasyCHECK replaces the MT 10/25 and supplements existing equipment. The changes in standards required the development of a new product to meet the needs of the market.

The EasyCheck was tested in compliance with EN 61010-1 by TÜV-Saarland.

In Austria, Germany and other European countries periodical checks on electrical appliances are a legal requirement.

The EasyCHECK is easy to operate and has a wide range of uses.

Master File Management:

The main information, such as type, series number, inventory number, manufacturer, electrical data, measuring method, test results, etc. can be acquired and evaluated.

Clients/company structures/departments:

Appliance management for different locations provides optimum transparency (divisions, subsidiaries, different companies, etc). The appliances are assigned to the respective client and can therefore be properly identified.

Test Lists:

Test lists can be generated according to individual criteria. You can generate a test list based on test date, department, defined appliances, supplier etc.

Today, safety is paramount for every company. Because of this, national and international safety standards have been introduced with the aim of preventing accidents.

These safety regulations force producers, users and maintenance workshops to undertake a series of checks (initial check, periodical checks, checks after maintenance and repair) and demand exact documentation of the test results.

Appliance Management – Web-based Software

In order to record and handle a large number of appliances, GIFAS developed software to supplement the Easy-CHECK. Communication with the Easy-CHECK occurs via an Ethernet connection. A web server accessed via a web browser displays the main part of the software. No additional software needs to be installed on the computer scheduled for operation. The test results are added to the master data in the test list. Individual tests can be made at any time. You can request and print any list or data you require, e.g. the latest test results at a given time. You can take all measurements on the spot and transfer all data to the database.

Testing and measuring equipment EasyCHECK

Digital – programmable – pioneering

The microprocessor-controlled electronic system allows functions to be adjusted in line with regulations.

The measuring method, indicating ranges and limiting values are programmable and can be adjusted to correspond to guidelines and current regulations.

Basic functions

- A) Earthing wire Ohm measurement
Measuring range: 30mΩ– 1,500mΩ
Measuring tolerance: at 200 mΩ – 1,100 mΩ +/- 10%
- B) Insulation Ohm measurement
Measuring range: 0.20 MΩ – 10 MΩ
Measuring tolerance: at 0.20 MΩ – 2 MΩ +/- 5%
- C) Equivalent leakage current
Measuring range 0.1 mA – 15 mA
Measuring tolerance: at 0.5 mA – 15 mA +/- 5%
- D) Contact electricity measurement – direct method
Measuring range: 0.1 mA – 0.5 mA
Measuring tolerance: at 0.1 mA – 0.5mA +/- 5%
- E) Earthing wire power measurement – direct method
Measuring range: 2 mA – 10 mA
Measuring tolerance: at 2 mA – 10 mA +/- 5%
- F / ⚡) Function test
Measuring range at 230 VAC Mains voltage
Measuring tolerance: at 60 – 3,700VA +/-15%

Basic Appliance

Model:

- 1 Schuko socket (black) for test specimen measurement A, B, C
- 1 Schuko socket (blue) for test specimen D, E, F

Interface:

via Ethernet interface (RJ 45)

Outer dimensions:

260 x 180 x 100 mm (L x W x D))

Display:

four-line display for operator guidance in four languages (German, English, French, Italian).



Portable testing and measuring equipment EasyCHECK


Dimensions:

430 x 290 x 230 mm (L x W x D)

The measuring unit including all its extension modules is fitted in an aluminium box for protection. There are pockets in the box cover for accessories and the operation manual.

Preset limited values are in accordance with:

ÖVE/ÖNORM E 8701-1
 ÖVE/ÖNORM E 8701-2-2
 DIN VDE 0701
 DIN VDE 0702

* Details of the standard device EasyCHECK (Basic functions / measurement) on page 4.

GIFAS EasyCHECK			
EDP No.	Prod. ID No.	Measurement*	GIFAS EasyCHECK Version
78304	PK.EC10	A, B, C, D, E, F	Basic version 230V in aluminium case
78306	PK.EC10.CEE.16A	A, B, C, D, E, F A, B, C A, B, C	Basic version 230V with additional built-in CEE module 5x16A 400V and 5 safety laboratory sockets
78558	PK.EC10.CEE.32A	A, B, C, D, E, F A, B, C A, B, C	Basic version with additional built-in CEE module 5x32A 400V and 5 safety laboratory sockets
78943	PK.EC10.CEE.16A.32A	A, B, C, D, E, F A, B, C A, B, C A, B, C	Basic version with additional CEE module 5x16A 400V CEE module 5x32A 400V and 5 safety laboratory sockets

Accessories		
EDP No.	Prod. ID No.	Description
79251	PK.PK2.P7900.EC10.MESSZUBEHÖR.01	3 safety probe cords black (2 m) 1 safety probe cord blue (2 m) 1 safety probe cord green (2 m) 5 clamps black 100 next testing date stickers
90953	EC10.BÜRSTENSONDE	Brush probe for testing of moving parts
27710	PRÜFSPITZE.SCHWARZ.1000V	Test probe for brush probe

Portable testing and measuring equipment EasyCHECK with cable test unit



Dimensions (Device in aluminum case):
580 x 470 x 230 mm (L x W x H)

Dimensions (Device in the solid rubber boxes):
500 x 360 x 173 mm (L x W x H)

For easy and fast testing of extension- and connecting cables as well as of electrical equipment as per:

ÖVE/ÖNORM E 8701-1
ÖVE/ÖNORM E 8701-2-2
DIN VDE 0701
DIN VDE 0702

Functions:

Test of cables:

- wiring continuity
- short circuit
- phase sequence

Continuity test:

- adjustable threshold value (up to 10Ω / 100Ω / 1kΩ / 1MΩ)
- optic display with light indicator
- acoustic signal (buzzer)

* A selective switch allows use of the test sockets either for the testing of extension or for the testing of appliances by EasyCHECK, on page 4.

Device in aluminium case		Device in solid rubber box			
EDP No.	Prod. ID No.	EDP No.	Prod. ID No.	Measurement*	GIFAS EasyCHECK Version
77828	PK2.EC10.KPR.1.1.D.M	77832	P.7900.EC10.KPR.1.1.D.M	A, B, C, D, E, F A, B, C A, B, C A, B, C	Basic version 230V Schuko socket and appliance plug16A 230V CEE socket and appliance plug 5x16A 400V 2x5 safety laboratory sockets
77711	PK2.EC10.KPR.31.1.D.M	76382	P.7900.EC10.KPR.31.1.D.M	A, B, C, D, E, F A, B, C A, B, C A, B, C A, B, C	Basic version 230V Schuko socket and appliance plug16A 230V CEE socket and appliance plug 5x16A 400V CEE socket and appliance plug 5x32A 400V 2x5 safety laboratory sockets
85667	ALUKOFFER.EC10.TYP2. TELESKOPGRIFF.M				Movable rack with telescopic handle (Device in aluminium case)

Accessories		
EDP No.	Prod. ID No.	Description
79251	PK.PK2.P.7900.EC10.MESSZUBEHÖR.01	3 safety probe cords black (2 m) 1 safety probe cord blue (2 m) 1 safety probe cord green (2 m) 5 clamps black 100 stickers next testing date
90953	EC10.BÜRSTENSONDE	Brush probe for testing of moving parts
27710	PRÜFSPITZE.SCHWARZ.1000V	Test probe for brush probe

Portable testing and measuring equipment EasyCHECK with integrated testing adapter 400V


Dimensions::

580 x 470 x 230 mm (L x W x H)

For testing extension cords, cords with non-rewireable plugs and electrical equipment, quickly and easily in accordance with the following standards:

ÖVE/ÖNORM E 8701-1
 ÖVE/ÖNORM E 8701-2-2
 DIN VDE 0701
 DIN VDE 0702

with sockets for Schuko, CEE 5x16A, CEE 5x32A.

Functions:
Cable test for Schuko, CEE 5x16A, CEE 5x32A extension cords:

- wiring continuity
- short circuit
- phase sequence

A switch enables you to use the test sockets for testing either the extension cables or equipment with EasyCHECK*.

*For details of the basic version of EasyCHECK (basic functions/ tests) see page 4.

Device in aluminium case			
EDP No.	Prod. ID No.	Measurement*	GIFAS EasyCHECK Version
85482	PK2.EC10.KPR.31.1.MOP2CEE400V.M	A, B, C, D, E, F A, B, C A, B, C A, B, C A, B, C D, E D, E	Basic version 230V in aluminium case Schuko socket and appliance plug 16A 230V CEE socket and appliance plug 5x16A 400V CEE socket and appliance plug 5x32A 400V 2x5 safety laboratory sockets 1 CEE socket 5x16A 400V for test units 1 CEE socket 5x32A 400V for test units Entry 1 CEE appliance plug 5x32A 1 Schuko plug adapter for 32A CEE coupling with 5 poles. Fusing 1 FI safety switch 4 poles 40/0.03A therm. 1 LS switch 3 poles 16A, 1 LS-switch 1 pole 16A 1 LS switch 1 pole 10A, 1 emergency stop button
85667	ALUKOFFER.EC10.TYP2.TELESKOPGRIFF.M		Movable rack with telescopic handle

Accessories		
EDP No.	Prod. ID No.	Description
79251	PK.PK2.P7900.EC10.MESSZUBEHÖR.01	3 safety probe cords (2 m) 1 safety probe cord blue (2 m) 1 safety probe cord green (2 m) 5 clamps black 100 stickers next testing date
90953	EC10.BÜRSTENSONDE	Brush probe for testing of moving parts
27710	PRÜFSPITZE.SCHWARZ.1000V	Test probe for brush probe

Stationary and portable function and safety testing apparatus



Functions:

Testing motors and appliances:

- voltage measurement: 0 – 500VAC including selective switch
- current measurement with selective switch 15/25/60A
- reversing switch
- star delta switch on laboratory socket
- test sockets and laboratory socket

Adjustable AC and DC voltage:

- ring core adjusting transformer 0-260V
- AC voltage outlet up to 10A
- DC voltage outlet via a bridge rectifier

Special voltages:

- 50V / 200 Hz checking part

Continuity test:

- optical and acoustic indication
- adjustable threshold values up to 10 Ω/100 Ω/1 kΩ/1 MΩ

Safety wiring:

- earth leakage circuit breaker 30mA
- emergency switch unlocked with key

Cable testing unit:

- testing extension cables for continuity, short-circuit and phase sequence for plugs.

EasyCHECK:

- portable unit
- functions – see detailed description on page 4

A switch enables you to use the test sockets to either test extensions or appliances with EasyCHECK.

The stationary and portable function and safety testing equipment is manufactured based on customer requirements in order to provide optimum performance.

Design the optimum solution for your requirements with our engineers:



Testing Adapter



Testing adapter for testing of three-phase current devices with EasyCHECK:

- contact electricity measurement (D)*
- earthing wire power measurement (E)*

* These measurements are carried out under operating voltage.

Testing Adapter		
EDP No.	Prod. ID No.	Description
77922	P.2516.EC10.PRÜFADAPTER.01	Testing adapter for devices with CEE 5x16A 400V
79119	P.3020.EC10.PRÜFADAPTER.01	Testing adapter for devices with CEE 5x32A 400V
85865	P.3020.EC10.PRÜFADAPTER.08	Testing adapter for devices with CEE 5x16A 400V + 5x32A 400V
80815	P.7800.EC10.PRÜFADAPTER.01	Testing adapter for devices with CEE 5x16A 400V + 5x32A 400V + 5x63A 400V + 5x125A (Test with 63A) 400V

Other solutions available on request.

Testing and measuring equipment Option – combined reader for RFID and Barcode



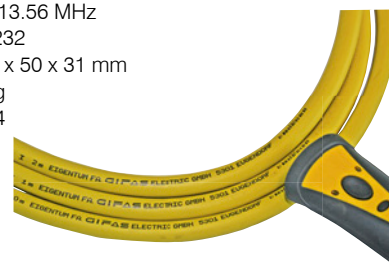
Combined reader for RFID and barcodes

With the appliance management web software (starting with version 1.14) this equipment reader enables you to read and assign barcodes or RFID transponders to each appliance.

In this way, every appliance can be identified without confusion and the required measurements released.

Technical Data

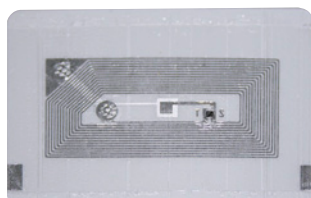
Barcode:	1D Laser Class1
RFID:	HF:13.56 MHz
Interface:	RS232
Dimensions:	116 x 50 x 31 mm
Weight:	80 g
Type of protection:	IP54



Testing Adapter		
EDP No.	Prod. ID No.	Description
90458	EC10.READER.RFID.BARCODE.RS232.3M	Combined reader RFID + Barcode
87988	EC10.RFID.ETIKETT.18x36MM	RFID-stickers – 16 x 36 mm plastic with special glue, precoded incl. additional barcode label packaging units: 50
87987	EC10.RFID.ETIKETT.42x30MM	RFID-stickers – 42 x 30 mm plastic with special glue, precoded incl. additional barcode label packaging units: 50
87989	EC10.BARCODEETIKETT.51x25MM	barcode stickers – 51 x 25 mm plastic packaging unit: 500



RFID-stickers - front side



RFID-stickers - rear side



Barcode-stickers

Appliance management web software
Sample test sheet

Check certificate				
Check of electrical units Basic principle for checks DIN VDE 0701 / 0702				
Client:	GIFAS Electric	Telephone number:	+43 (0) 6225/7191-0	
Company:	GIFAS Electric GmbH	Fax number:	+43 (0) 6225/7191-47	
	Pebering-Sträß 2 5301 Eugendorf	E-Mail:	office@gifas.at	
		DVR number:		
Unit number:	3	Test cycle:	0 Months	
Manufacturer:	GIFAS Electric GmbH	Voltage:		
Type, Description:	Schuko-Verlängerung 230V 16A 25m	Current:		
Serial no.:	59760	Power:		
Inventory no.:	264700	Frequency:		
Unit type:	Verlängerungskabel 230V	Kostenstelle:		
Departments:	Elektro Abteilung	Benutzer:		
Measuring instrument:	EasyCHECK	Checked at:	04.06.2012	
Serial no.:	1810-155179 V.1.16	Next check at:	04.06.2012	
Next calibration:	16.03.2012	Printed at:	15.10.2013	
Checked by:	Johann Maier	Checklist / No.:	1 : 3 / 5	
Measurement	Measuring range	Measuring value	Limit value	Result
Protective conductor re:	e 30 - 1500 mΩ	<30 mΩ	300 mΩ	OK
Insulation	0.22 - 10.00 MΩ	>10.00 MΩ	2.00 MΩ	OK
Leakage current	0.10 - 15.00 mA	<0.10 mA	0.5 mA	OK
Visual check:				OK
Result:	Test sample has passed check			
Comment:				
Tester:	(Place, date, signature, stamp)			

GIFAS-ELECTRIC EasyCHECK

Client: GIFAS Electric
User: Administrator
Log off
Unit: 1810-155179 V.1.16

Overview Units Search Checklist Setup

Position: Units /

Add	No.←	Unit type	Type	Manufacturer	Serial no.	Inventory no.	Department	OK	Action
<input type="checkbox"/>	1	Scheinwerfer 230V	97610	GIFAS Electric GmbH	25067	256077	Mechanische Abteilung	OK	
<input type="checkbox"/>	2	Scheinwerfer 230V	97610	GIFAS Electric GmbH	25068	256078	Mechanische Abteilung	OK	
<input type="checkbox"/>	3	Verlängerungskabel 230V	Schuko-Verlängerung 230V 16A 25m	GIFAS Electric GmbH	59760	264700	Elektro Abteilung	OK	
<input type="checkbox"/>	4	Verlängerungskabel 230V	Schuko-Verlängerung 230V 16A 30m	GIFAS Electric GmbH	59761	264701	Elektro Abteilung	OK	
<input type="checkbox"/>	5	Verlängerungskabel 400V	CEE-Verlängerung 400V 63A 25m	GIFAS Electric GmbH	59762	264702	Technik	OK	
<input type="checkbox"/>	6	Scheinwerfer 230V	LED-Strahler 230V 140W	GIFAS Electric GmbH	60021	117701	Schlosserei	OK	
<input type="checkbox"/>	7	Kabelrolle 230V	Leitungsrolle 230V 16A 40m	GIFAS Electric GmbH	500124	200771	Maschinenschlosserei	OK	
<input type="checkbox"/>	8	Kabelrolle 400V	Leitungsrolle 400V 16A 30m	GIFAS Electric GmbH	500125	200772	Maschinenschlosserei	OK	
<input type="checkbox"/>	9	Winkelschleifer	Winkelschleifer 750W	Fein	226710	30017	Mechanische Abteilung	OK	
<input type="checkbox"/>	11	Scheinwerfer 230V	97610	GIFAS Electric GmbH		256077	Mechanische Abteilung	--	

Select all / Cancel selection
Add selected units to checklist
Print unit list

Direct measurement, Open, Edit, Delete, Add to checklist

GIFAS-ELECTRIC EasyCHECK

Client: GIFAS Electric
User: Administrator
Log off
Unit: 1810-155179 V.1.16

Overview Units Search Checklist Setup

Departments

Unit groups

Unit types

Info marks

Company data

User

New unit group

Name←	Norm	A	B	C	D	E	F	Action
Elektromotor bis 3,5kW SK I	EN60204	300 mΩ	1,00 MΩ	3,5 mA				Yes
Handgef. E-Werkz. SK I	E8701.S1	300 mΩ	1,00 MΩ	3,5 mA				Yes
Handgef. E-Werkz. SK I m. El.	E8701.S1 Elektr	300 mΩ			0,50 mA	3,50 mA		Yes
Handgef. E-Werkz. SK II	E8701.S2		2,00 MΩ	0,5 mA				Yes
Handgef. E-Werkz. SK II m. El.	E8701.S2 Elektr.				0,50 mA			Yes
Haushaltsgeräte SK I	E8701.S1	300 mΩ	1,00 MΩ	3,5 mA				Yes
Haushaltsgeräte SK II	E8701.S2		2,00 MΩ	0,5 mA				Yes
Heizg. SKI<=3,5kW	E8701.S1	300 mΩ	0,30 MΩ	3,5 mA				Yes
Heizg. SKI<=3,5kW m. El.	E8701.S1 Elektr.	300 mΩ				3,50 mA		Yes
Heizg. SKI<=3,5-10kW	E8701.S1 3,5-10kW	300 mΩ	0,30 MΩ	10,0 mA				No
Heizg. SKI<=3,5kW m. El.	E8701.S1 Elektr.	300 mΩ				10,00 mA		No
Heizg. SKII<=3,5kW m. El.	E8701.S2				0,50 mA			Yes

Application examples / customer solutions



EDP No. 79234



EDP No. 94291

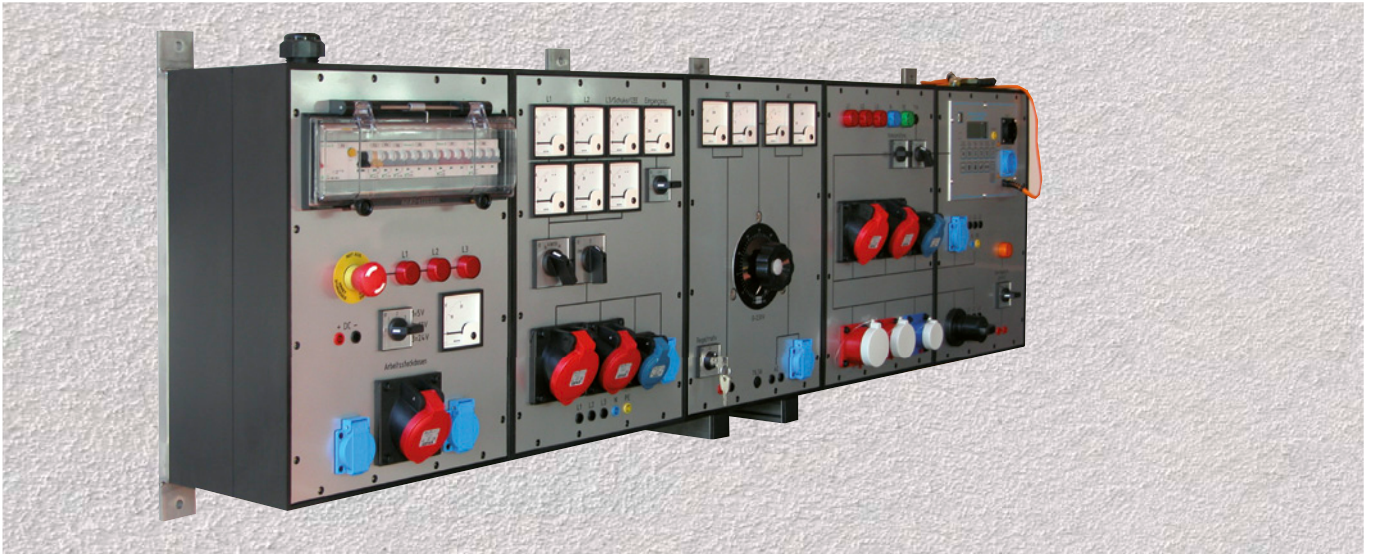


EDP No. 81823

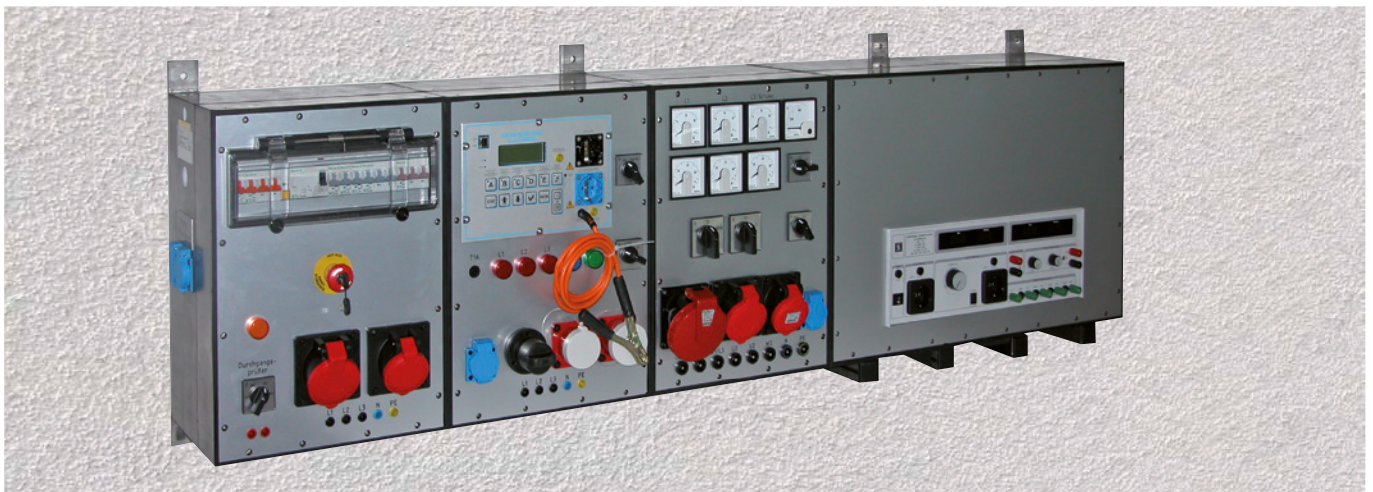


EDP No. 80155

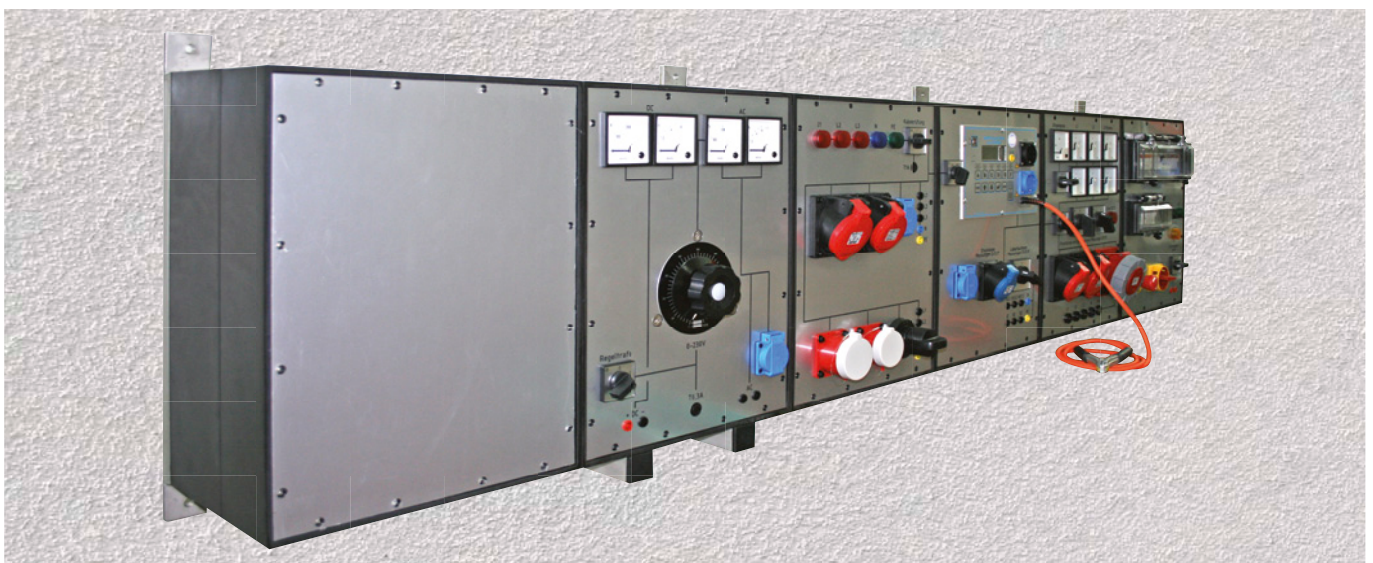
Application examples / customer solutions



EDP No. 91403



EDP No. 75102



EDP No. 87553

CONTACT US

Subject to technical changes V10/2013

