

YOUR WISHES SET OUR STANDARDS

Member of the Network

LEITBETRIEBE AUSTRIA
www.leitbetriebe.at

Boxes with safety and isolator switches



Boxes with safety and isolator switches

Pages 4 - 6

Emergency stop button



Page 4

Main switch / mains switch



Page 4

Main switch / repair switch



Page 5

Safety switches



Page 5

Control panel



Page 6

Main switch / mains switch



Page 6

Boxes with safety and isolator switches

Pages 7 - 8

Main switch box with built-in work sockets



Page 7

Safety switches



Page 7

Control panel



Page 8

Application examples

Page 9

Application examples



Page 9

Optimum safety – for people and machinery

The safety of your employees is guaranteed by complying with safety regulations and instructions.

Five safety rules:

1. switch off
2. lock against reclosure
3. check that lines and equipment dead
4. ground and short circuit phases
5. cover, partition or screen of adjacent line sections

Isolator switch

Definition

Isolator switches must disconnect all poles, and do not have offbreaking capacity. It is designed in such a way that they are impossible to switch on again by mistake. The switchgear should be black.

Main switch / Repair switch

(main switches for power supply of machines and hoisting tackle)

Definition

These main switches cannot be used as emergency isolator switches. The switchgear should be black. It must be possible to connect and disconnect all poles and to lock the switch in the OFF position, e.g. by using a padlock.

Safety switch with emergency function

Definition

This main switch can be used as an emergency switch. The colour of the switchgear must be red, with a yellow base. It must be possible to lock the switch in the OFF position, e.g. by using a padlock.

GIFAS enables you to comply with the authorities' regulations without limiting comfort.

Even in exposed locations, the combination of switches, operational equipment, and signalling devices installed in solid rubber boxes is the ideal installation solution.

Emergency stop button

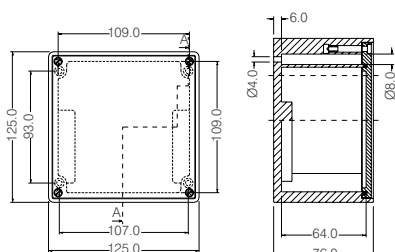


Technical data

Width x height x depth: 125 x 125 x 76 mm
 (Dimensions without installations)
 Cabinet: Solid rubber Series 1212
 Entry: 1/cable gland M20
 Model: 1/self locking emergency button
 (emergency button with key available)
 contacts: 1 opener
 Type of protection: IP65

EDP No.	Product ID No.
66806	1212.NOT-AUS.1Ö.1M20.IP65

Mounting equipment supplied by you can be incorporated into the selected box during production.
 Engraving is possible.



Main switch / mains switch



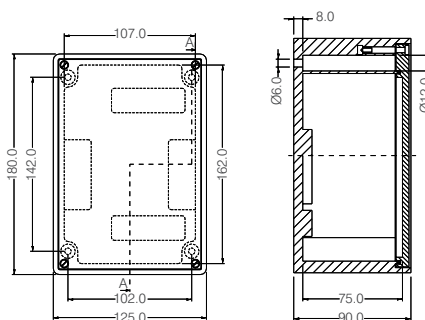
Technical data

Width x height x depth: 125 x 180 x 90 mm
 (Dimensions without installations)
 Cabinet: Solid rubber Series 1812
 Entry: 2/cable glands M20
 Model: 1/switch 3 pole switch, black handle
 (with maximum use of 3 padlocks)
 AC-21A 20A, AC-23B 5.5kW 690V
 Type of protection: IP65

EDP No.	Product ID No.
48619	1812.KG10B.T103.2M20

Other operating capacities on request.

Mounting equipment supplied by you can be incorporated into the selected box during production.
 Engraving is possible.



Main switch / repair switch



Technical data

Width x height x depth: 160 x 250 x 90 mm
(Dimensions without installations)
Cabinet: Solid rubber Series 2516

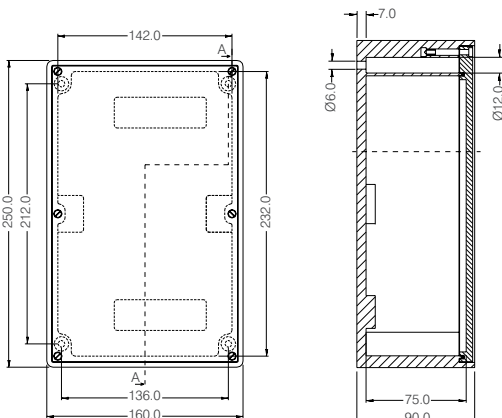
Entry: 2/cable glands M25
Model: 3/pole switch, black handle
(with maximum use of 3 padlocks)
AC-21A 25A, AC-23B 7.5kW 690V

Type of protection: IP65

EDP No.	Product ID No.
48620	2516.1KG20B.T103.2M25

Other rated operating capacities on request.

Mounting equipment supplied by you can be incorporated into the selected box during production.
Engraving is possible.



Safety switches



Technical data

Width x height x depth: 160 x 280 x 133 mm
(Dimensions without installations)
Cabinet: Solid rubber Series 7250

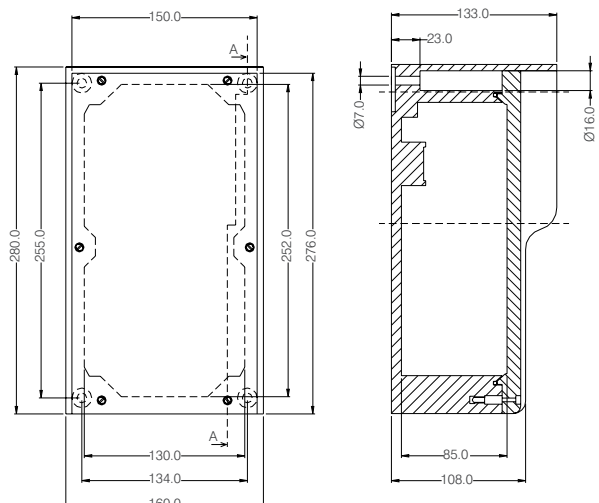
Entry: 2/cable glands M20
(1x with blind plug)
2/cable glands M32
2/screen clamps for Ø 10-20 mm
Model: 1/switch 3 pole switch red / yellow
(with maximum use of 3 padlocks)
AC-21A 80A, AC-23A 37kW, 400V,
AC-23A 18.5kW 690V
inclusive 2 auxiliary contact 1 S + 1 Ø

Type of protection: IP65

EDP No.	Product ID No.
78659	7250.ZPA.18,5KW.M32.FU

Other operating capacities on request.

Mounting equipment supplied by you can be incorporated into the selected box during production.
Engraving is possible.



Control panel with built-in main emergency switch



Technical data

Width x height x depth: 250 x 360 x 133 mm
(Dimensions without installations)

Cabinet: Solid rubber Series 3800

Entry: 2/cable glands M20
2/cable glands M32

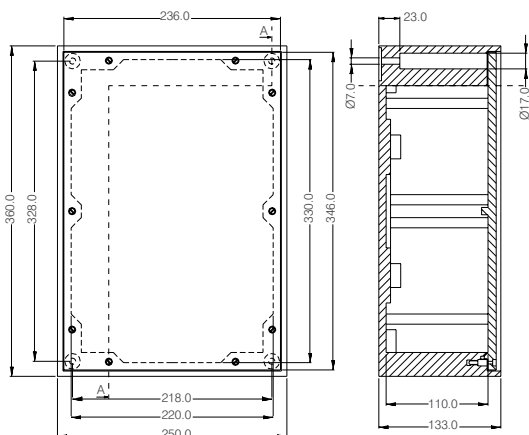
Model: 1/switch, 3/pole switch yellow / red handle
(with maximum use of 3 padlocks)
AC-21A 32A, AC-23B 11kW 690V
including 2 / auxiliary contacts
1/control button START-RIGHT
1/control button START-LEFT
1/control button STOP
Clamp wired connection

Type of protection: IP65

EDP No.	Product ID No.
47840	3800.ANTRIEB.093

Other operating capacities on request.

Mounting equipment supplied by you can be incorporated into the selected box during production.
Engraving is possible.



Main switch / mains switch



Technical data

Width x height x depth: 250 x 360 x 276 mm
(Dimensions without installations)

Cabinet: Solid rubber Series 3900

Entry: 1/cable gland M25
2/cable glands M40

Model: 1/switch 3 pole switch black handle
(with maximum use of 3 padlocks)
AC-21A 150A, AC-23A 75kW 400V

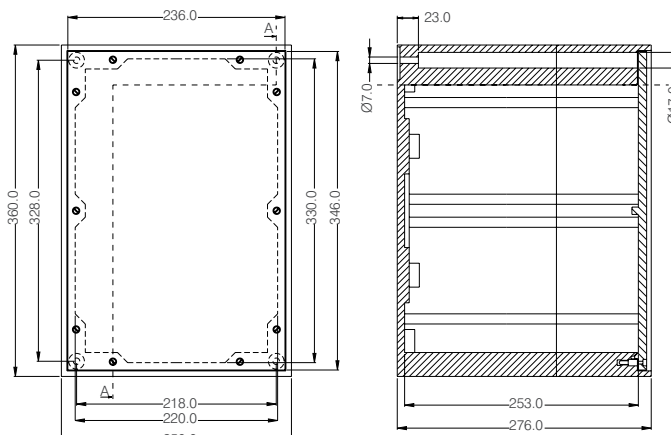
Outlet in neutral position (0)

Type of protection: IP65

EDP No.	Product ID No.
48706	3900.RECHENREINIGUNG

Other operating capacities on request.

Mounting equipment supplied by you can be incorporated into the selected box during production.
Engraving is possible.



Main switch box with built-in work sockets

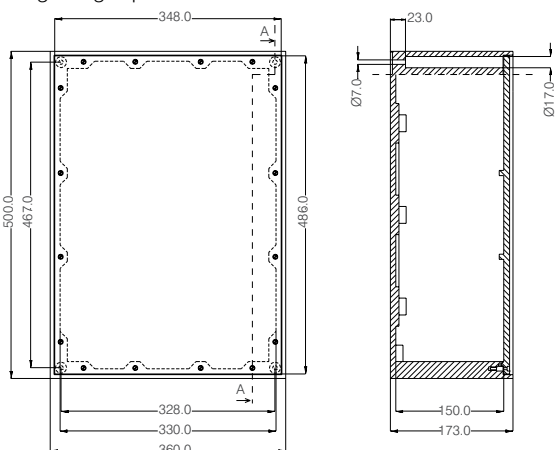


Technical data

- Width x height x depth: 360 x 500 x 173 mm
(Dimensions without installations)
- Cabinet: Solid rubber Series 7900
(1 Viewing window with 17 TE)
- Entry: 1/cable gland M16
3/cable glands M20
2/cable glands M32
- Model: 1 main power switch 3 pole, black handle
(with maximum use of 3 padlocks)
AC-21A 25A, AC-23A 15kW 400V
1/auxiliary power switch 2 pole black handle
(with maximum use of 3 padlocks)
AC-21A 20A, AC-23A 3.7kW 230V
- Power supply earthing in neutral position (0)
- Work sockets 1/Schuko socket 16A 230V
1/CEE-Socket 5x32A 400V
with LS and FI fused sockets
- Type of protection: IP44 (IP65 possible)

EDP No.	Product ID No.
48708	7900.LASTENAUFZUG

Other operating capacities on request.
Mounting equipment supplied by you can be incorporated into the selected box during production.
Engraving is possible.



Safety switch



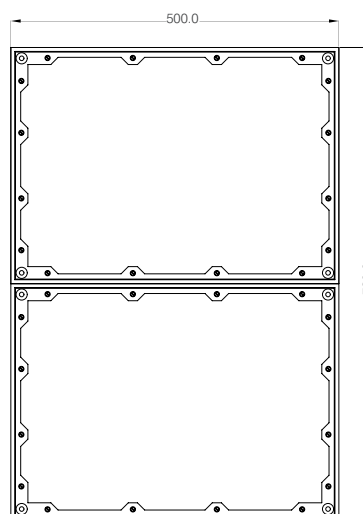
Technical data

- Width x height x depth: 500 x 720 x 173 mm
(Dimensions without installations)
- Cabinet: Solid rubber Series 2x7900
with transparent Cover
- Entry: 2/ cable glands M20 (1x with blind plug)
2/ cable glands M50
- Model: 1 main power switch 3 pole, yellow / red handle
(with maximum use of 3 padlocks)
AC-21A 200A, AC-23 110kW 400V,
AC-23 200kW 690V
inclusive 2 auxiliary contact 1 S + 1 Ö
2/screen clamps für Ø20-37 mm
- Type of protection: IP65

EDP No.	Product ID No.
85608	2.7900.ZPA.190KW.2M50.FU

Other operating capacities on request.

Mounting equipment supplied by you can be incorporated into the selected box during production.
Engraving is possible.



Control unit with built-in emergency main switch



Technical data

Width x height x depth: 360 x 500 x 173 mm

(Dimensions without installations)

Cabinet: Solid rubber Series 7900 with door

Entry: 2/ cable glands M40
2/ cable glands M20

Model: 1 main power switch 3 pole, yellow / red handle
(with maximum use of 3 padlocks)
AC-21A 100A, AC-23B 37kW 400V
incl. 2 auxiliary pre-mating closing contacts
1/control button: START
1/control button: STOP
Fully wired clamps ready to be connected

The rotating locks and the switch with door clutches allow easy and quick access to the internal part of the box for alterations and tests.

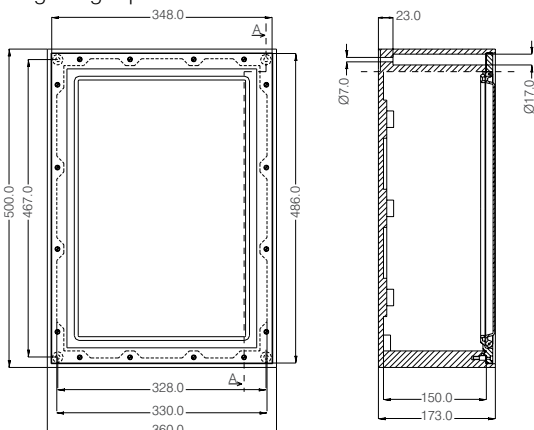
Type of protection: IP54

EDP No.	Product ID No.
48707	7900.T.MOTOR.30KW

Other operating capacities on request.

Mounting equipment supplied by you can be incorporated into the selected box during production.

Engraving is possible.



Application examples / customer solutions



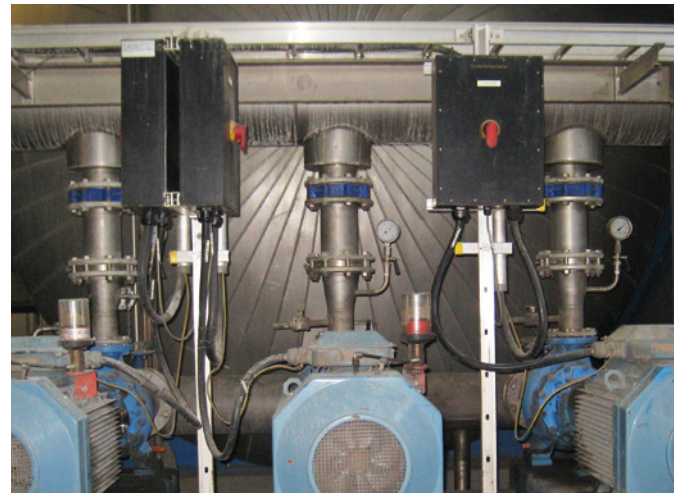
EDP No. 50433, 79323, 54522, 50436 (11 - 37kW 690V)



EDP No.101321 (630kW 690V)



EDP No. 86378 (200kW 690V)



EDP No. 63894, 64099 (75kW 690V)



EDP No. 74065 (390kW 690V)



EDP No. 76041

CONTACT US



GIFAS
ELECTRIC

GIFAS-ELECTRIC GmbH
Pebering-Straß 2
5301 Eugendorf
AUSTRIA

Web: www.gifas.at
Mail: office@gifas.at
Phone: +43 6225 / 7191 - 0
Fax: +43 6225 / 7191 - 47

Subject to technical changes V06/2013