



Kit Accessories



AEA Technology, Inc. specializes in hand-held, light-weight, and economical RF testing solutions. Our 140-525™ and CellMate™ EX meters feature graphical sweep and numerical data for SWR and Return Loss. The VIA™ Analyzer adds graphical sweep and numerical data for Impedance and Resistance. In addition to presenting accurate data, all our SWR Meters have non-volatile memories, backlit LCD's, and optional PC software for data storage, upload, saving printing, and export. These instruments are rugged and "Belt Friendly" for easy transport up towers or other climbing locations. All can be operated on AA alkaline or NiMH batteries, or AC powered.

Used by the military, communications industry professionals, and amateur radio operators these instruments were designed to provide accurate information on antenna system performance. Built tough and weather resistant they are designed to go into the field or to sea and provide years of reliable performance.

Features

- Auto scaling
- Auditory cues
- Signal generator mode
- Self-test function
- SuperTwist LCD and Backlight
- Battery saver function
- Relative field strength in 140-525 & CellMate EX
- Calculated bandwidth in VIA Analyzer
- Kit includes:
 - Optional MS Windows software
 - Serial cable
 - AC power adapter
 - Belt case with strand hook and shoulder strap

Benefits

- Simplicity in testing and tuning antennas
- Fast accurate results in a hand-held instrument
- "Belt Friendly" for transport and climbing
- Compact rugged design for years of service
- Ability to save and recall test results on the instrument
- Upload saved tests to a PC, display, print, archive, and export test results

Part Numbers

140-525 Analyzer	5006-5001
140-125 Analyzer Kit.....	5006-1500
CellMate EX.....	6010-5000
CellMate EX Kit.....	5006-1500
VIA Analyzer	5013-5000
VIA Analyzer Kit.....	5013-1500

Ordering the kit version provides a significant savings over ordering the kit's accessories individually. Kit orders shipped to Europe and certain Asian countries contain a 2 pin Schuko plug adapter. Kit orders shipped to Australia and New Zealand contain their plug style adapter. Countries with other plug styles may need to procure a plug adapter locally. See reverse for other optional accessories.



5933 Sea Lion Place, Suite 112
 Carlsbad, CA 92010
 TEL 800-258-7805 or +1-760-931-8979
 FAX +1-760-931-8969

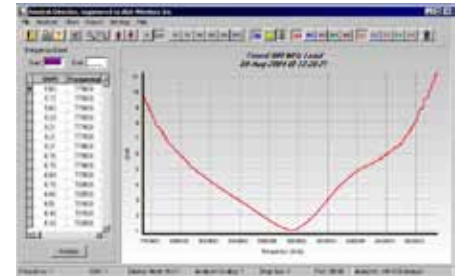


Made in the USA

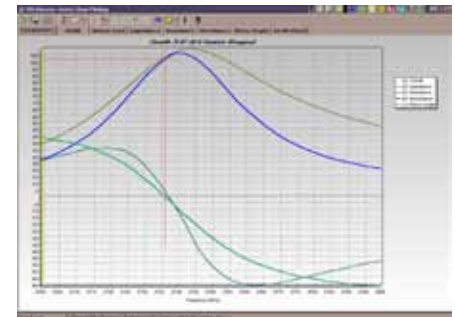
SWR Meters' Comparison			
Model	140-525	CellMate EX	VIA Analyzer
Measurements			
SWR	x	x	x
Return Loss	x	x	x
Impedance (Z)			x
Resistance (R)			x
Field Strength Function	x	x	
Calculated Band width			x
Specifications			
Frequency Range	135 - 525 MHz	600 - 999 MHz	0.1 -54 MHz
Resolution	10 KHz	10 KHz	1KHz
Max Sweep Width	500 MHz	200 MHz	20 MHz
Sweep Speed	1.6 seconds	1 second	1.2 seconds
Impedance Range			2-1000 Ohms
Harmonic & Spurious	>40 dB below fundamental	>40 dB below fundamental	>30 dB below fundamental
VSWR Plot Range	1:1 to 10:1	1:1 to 10:1	1:1 to 20:1
Return Loss Plot Range	- 1.7 to -30dB	- 1.7 to -30dB	-1 to -40dB
Impedance Plotting Scales			0-100 Ohms 0-250 Ohms 0-1000 Ohms
Resistance Plotting Scales			0-100 Ohms 0-250 Ohms 0-1000 Ohms
Phase Angle			-45° to +45°
Maximum Input Power	+20 dBm	+20 dBm	+20 dBm
Output Power	+5 dBm	+5 dBm	+5 dBm
Connector Port	NType	NType	NType
Non-Volatile Memory	15	15	4
PC Software	optional	optional	optional
Applicable Software	Analyst Director	Analyst Director	VIA Director
Serial Port Speed	9600-19.2K baud	9600 Bps	4800 & 9600 Bps
Power Specifications			
Voltage Requirement	10 VDC Min	10 VDC Min	12 VDC Min
Current Requirement	380 mA	250 mA	150 mA
Battery Types (external recharging)	8 AA alkaline or NiMH	8 AA alkaline or NiMH	8 AA alkaline or NiMH
Battery Life	8 Hrs typical	10 Hrs typical	16 Hrs typical
Physical			
LCD	64 x 128 backlit	64 x 128 backlit	64 x 128 backlit
Size	8.5" x 4.3" x 2.25" 215 x 110 x 58 mm	8.5" x 4.3" x 2.25" 215 x 110 x 58 mm	8.5" x 4.3" x 2.25" 215 x 110 x 58 mm
Weight	20 oz (585grams)	20 oz (585grams)	20 oz (585grams)
Optional Accessories			
PC Software	Analyst Director 5005-1201	Analyst Director 5005-1201	VIA Director 5013-1201
Serial Cable	0070-1201	0070-1201	0070-1201
Soft Belt Case	5001-1002	5001-1002	5001-1002
AC Power Adapter 90-240VAC, 50-60Hz	5001-0202	5001-0202	5001-0202
Soft Equipment Case	6015-1002	6015-1002	6015-1002
Hard Equipment Case	6015-1003	6015-1003	6015-1003
DC Vehicle Adapter	6025-0250	6025-0250	6025-0250
NiMH Batteries & Charger Kit	0010-0020	0010-0020	0010-0020

NOTE: Items highlight in blue are included with kit orders

Both the 140-525 and CellMate EX use "Analyst Director" software



VIA Analyzer uses the "VIA Director" software



Both the Analyst Director and VIA Director software applications can:

1. Upload saved test results
2. Operate the instrument in remote control
3. Expand graphical views
4. Print graphs and data
5. Archive test results on the PC
6. Export to other applications

Ten minute demo software downloads are available from our web site